



# Scorecard 2006

## Nevada Natural Heritage Program Highest Priority Conservation Sites





**Literature Citation:** Nevada Natural Heritage Program. 2006. *Scorecard 2006: Highest Priority Conservation Sites*. Carson City, Nevada.

**Program Staff:**

Administrator	Glenn Clemmer
Office Manager	Desirae Munns
Botanist	James Morefield
Biologist	Jennifer Newmark
Biologist/Data Manager	Eric Miskow
Biologist	Ali Chaney
Ecologist	Eric Peterson
Planner	Ed Skudlarek

**Cover Photographs:** (clockwise from top)

Warm Creek Ranch (Scorecard site), Clover Valley (macrosite). Photo by Eric Miskow, Nevada Natural Heritage Program

Crystal Springs (Scorecard site), Pahrangat Valley (macrosite). Photo by Eric Miskow, Nevada Natural Heritage Program

*Arctomecon californica*, Las Vegas Bearpoppy (in Scorecard sites within Lake Mead, Las Vegas, and Pahrump Valley macrosites). Photo by Susan Cochrane Levitsky, California Dept. of Fish and Game

*Rana onca*, relict leopard frog (in Scorecard sites within Lake Mead Macrosite). Photo by Ross Haley, National Park Service

**A note about inside illustrations**

Among the illustrations prepared by Josette Gourley for the Foresta Institute are rare desert fishes endemic to springs of Nevada. Most of the conservation sites in Scorecard 2006 encompass isolated spring systems, many of which harbor fish taxa which evolved in Nevada waters and do not occur anywhere else in the world. Furthermore, the Scorecard spring sites variously host many critically imperiled taxa of amphibians, mollusks, aquatic insects, and plants. J. Gourley's drawings are featured to symbolically spotlight the significant place held by springs in representing the biological heritage of Nevada.

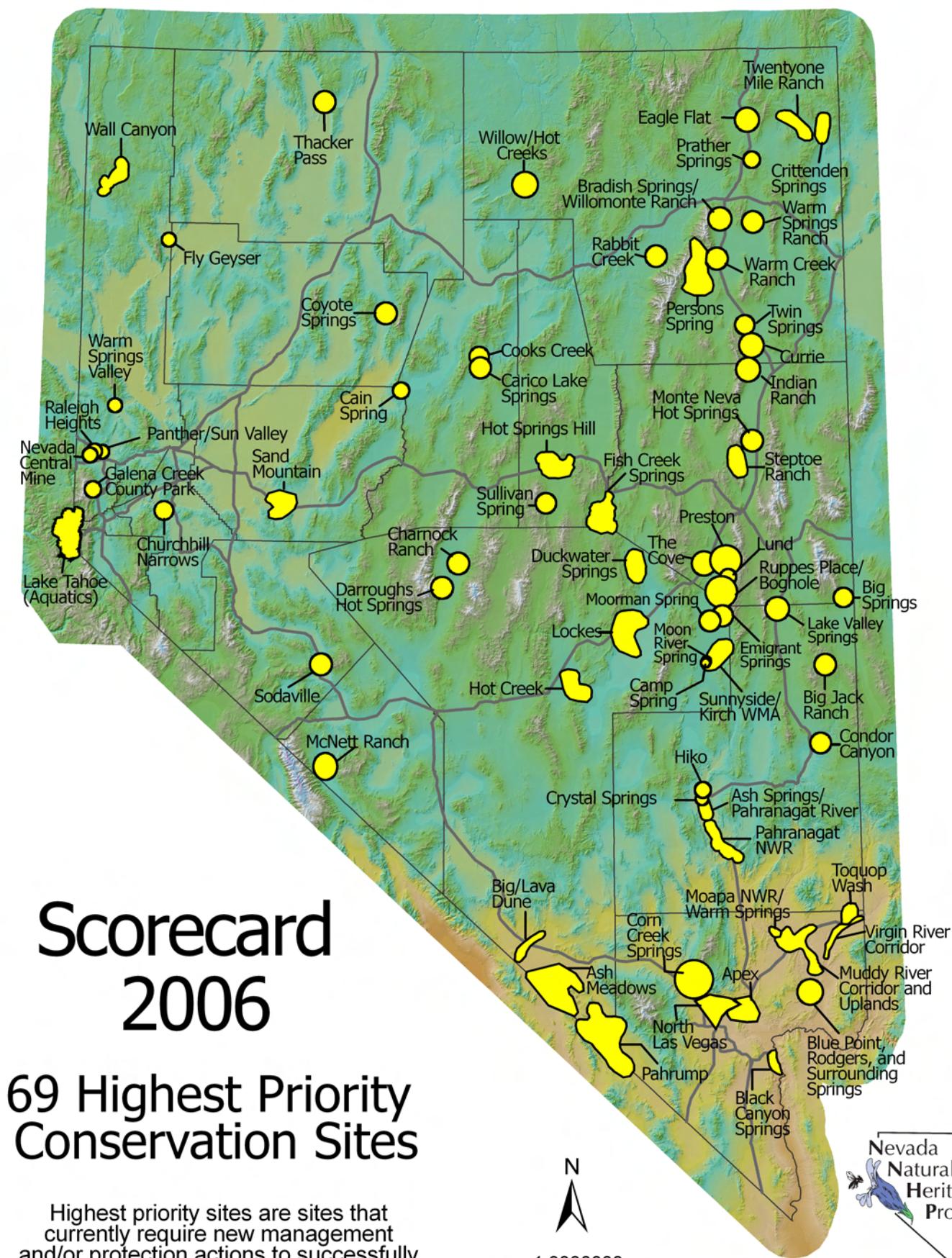
# Scorecard 2006 Report



## Contents

---

Nevada Map of Scorecard 2006 Highest Priority Conservation Sites	2
Overview – Scorecard 2006: Highest Priority Conservation Sites	3
Scorecard 2006 Summary List	9
Column Definitions for Highest Priority Conservation Sites	14
Scorecard 2006 Detailed Site List	17
Acknowledgements	49
Appendix – Changes in the Scorecard Site List	50
Nevada Map of Observed Locations of Rare and At-Risk Plants and Animals	55
Nevada Native Species Survey Report Form	56
Nevada Natural Heritage Program Data Request Form	57





# SCORECARD 2006: HIGHEST PRIORITY CONSERVATION SITES

## OVERVIEW

From a biological perspective, Nevada is improbably rich. The prominence of sparsely vegetated valleys and mountainsides belies an astonishing variety of plants, animals, and natural communities. Using data provided by the Nevada Natural Heritage Program (NNHP) and 49 other state biological data centers, NatureServe<sup>1</sup> conducted a comparative analysis of state biological resource characteristics. Only ten states reported more species than the 3,872 found here – 2,875 of which are plants, and just five contained more endemic species than the 173 peculiar to Nevada.<sup>2</sup>

Our state's biological heritage, however, is declining. Thirteen endemic species and subspecies have been extinguished. Nearly 16 percent of the native species found in Nevada are in danger of extinction, many in critical danger. A large proportion of the imperiled taxa are fishes, amphibians, and aquatic invertebrates, indicative of the mounting stresses placed on fragile aquatic and wetland resources. One third of the at-risk or sensitive plant and animal species the NNHP tracks in fact are dependent on natural water body and wetland habitats. These benchmark statistics reflect Nevada's remarkable biological legacy and the magnitude of the conservation challenge facing our rapidly growing state.

Mostly, we find species in serious conservation predicaments where little of their habitat remains intact or unaltered. NatureServe also examined biological assessments of 1,880 at-risk and federally listed species in the U.S. and found

*Crenichthys baileyi* (White River springfish)



*Crenichthys baileyi* 1 cm.

Endemic to isolated springs in the White River system, *Crenichthys baileyi* is represented by five subspecies. *C. b. baileyi* (White River springfish); *C. b. moapae* (Moapa White River springfish); *C. b. grandis* (Hiko White River springfish); *C. b. thermophilus* (Moorman White River springfish); and, *C. b. albivalis* (Preston White River springfish). *C. b. baileyi* and *grandis* are on the federal endangered list; the other subspecies are federal species of concern. Scorecard sites within three macrosites (Pahranagat, Moapa, and White River valleys) contain almost all occurrences of these taxa. Stressors include introduction of exotic fishes; excessive livestock grazing; and, modification of flow and geomorphology. Illustration by Josette Gourley, Foresta Institute.

<sup>1</sup> NatureServe coordinates the exchange of biodiversity data and information technology developments within the 80-member network of Natural Heritage programs and biological data centers in all fifty states and neighboring countries.

<sup>2</sup> In the NatureServe report, States of the Union: Ranking America's Biodiversity, prepared by Bruce Stein in 2002, only full species were counted. Actually, the NNHP maintains data files on approximately 316 species and subspecies that are Nevada endemics.



habitat loss and degradation was a key factor in 85 percent of the cases. In a similar analysis to ascertain prevalent causes of habitat destruction, the conversion of land for agriculture and for commercial development ranked highest, followed by water development, outdoor recreation including off-road vehicles, livestock grazing, pollution, infrastructure development including roads, and disruption of fire ecology. Here in arid Nevada, urbanization, water developments in stream and spring systems, excessive grazing, invasive nonnative plants and wildlife, and disruption of vegetation succession and fire cycles are widespread biodiversity threats. The expanding population and economy is changing human activities in ways and places that compound stresses on rare and vulnerable biota in urban, rural, and remote areas. The protection of Nevada's natives depends upon equally robust progress in conservation-minded designs on growth and development.

*Cyprinodon nevadensis* (Amargosa pupfish)



Two taxa of *C. nevadensis* are endemic to isolated warm spring systems in southern Nevada (the Ash Meadows Scorecard site entails all known occurrences): *C. n. mionectes* (Ash Meadows Amargosa Pupfish) and *C. n. pectoralis* (Warm Springs Amargosa pupfish). Both are on the federal endangered list. Populations occur within the Ash Meadows National Wildlife Refuge. Stressors include depletion of groundwater and introductions of several exotic species. Illustration by Josette Gourley, Foresta Institute

To support proactive conservation, the NNHP maintains a statewide clearinghouse of vital statistics on biodiversity. Gathering data on the occurrences, biology, ecology, and viability of rare and at-risk species and populations is a continuous activity, along with the documentation of metadata. Concurrent with updating records for the 700-plus kinds of native plants and animals we track, biologists routinely assess species conservation status to ascertain whether recent information warrant adjustments to risk or rarity ranks.

As a NatureServe member, the NNHP follows the network's biological data management model, which emphasizes collection of data from experts with local knowledge; application of stringent inventory protocols and data quality standards; and, reproducing biodiversity data in a range of geographic scales and formats for use by various management, monitoring, and planning entities. Adherence to these strategies enables Natural Heritage programs to objectively provide reliable information – requisite attributes for setting conservation priorities and determining protective measures in balance with human needs. Additionally, the Natural Heritage employs a standardized method for ranking the conservation status of species and of sites where at-risk species occur. In fact, Natural Heritage methods are being incorporated more often into natural resource planning and management approaches used by state and federal agencies.

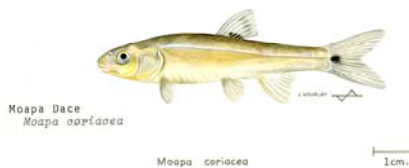
The information system maintained by the NNHP to track and examine the conservation status of native biota is truly extensive (more than 7,000 occurrence records), but the method used to rank rarity and risk is straightforward and repeatable for all species.

Knowledgeable biologists rank each species independently on global (G) and state (S) scales according to its rarity and vulnerability. Both rankings are based on a scale of 1 to 5. A rank of 5 indicates the status of the species is widespread and secure within its natural range, and 1 indicates the species is critically imperiled. Other indicators may be added on to a rank such as T-rank for a subspecies or B for breeding status within the state.<sup>3</sup> Species tracked by the NNHP generally are ranked G1–G3 and/or S1–S3.

The method for ranking conservation sites is similar to that used for at-risk species. New occurrence records are added to our databases daily by staff biologists. Vulnerability ranks for each entry are reviewed and the occurrence is tentatively assigned to a conservation site.<sup>4</sup> The Scorecard assessment process begins with a re-examination of conservation sites to delineate areas that contain a high diversity of vulnerable species. The singular population occurrence of a critically imperiled species also may qualify for Scorecard analysis. The process results in a Biodiversity Significance Rank (B) of each site from 1 to 5, with 1 being most significant and 5 least.

Sites with high B ranks are further ranked according to their Protection Urgency (P) and Management Urgency (M), again on scales from 1 to 5 with 1 being the most urgent. Those sites that rank highest (i.e., have the lowest numeric sum of the three ranks – B1 P1 M1) form the working list of highest priority conservation sites. The working list is reviewed internally as well as externally by biologists, land managers, conservation professionals and other knowledgeable individuals. The resulting final list constitutes the current Scorecard sites – those that require new management and/or protection actions to successfully conserve a significant assemblage of sensitive species, and to prevent the loss of one or more species or populations in the immediate future.

*Moapa coriacea* (Moapa dace)



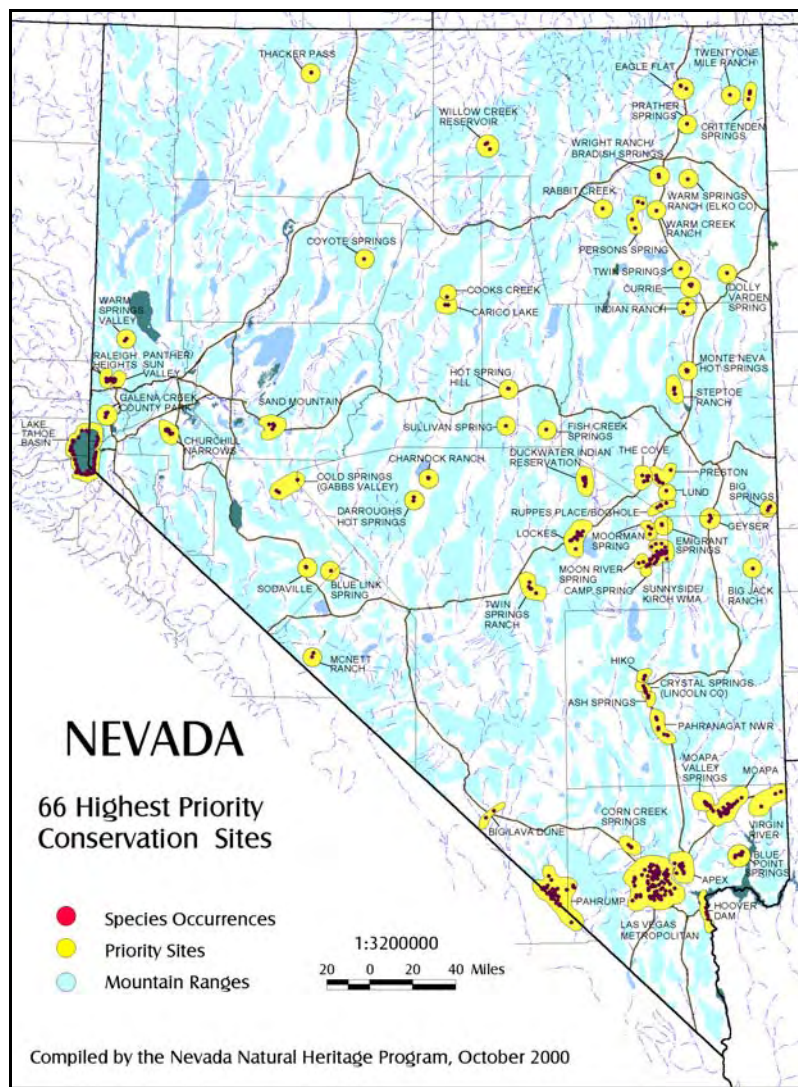
Surviving populations of Moapa Dace are restricted to portions of three spring systems. Its range has substantially declined since 1930. Moapa National Wildlife Refuge (NWR) was established to protect critical habitat. *M. coriacea* is on the federal endangered list. Stressors include elimination of habitat for resort development; depletion of groundwater; modification of spring flow and geomorphology; and, introduction of exotic fishes. See Moapa NWR/Warm Springs Scorecard Site. Illustration by Josette Gourley, Foresta Institute

<sup>3</sup> For example, the Western yellow bat, *Lasiurus xanthinus*, is globally widespread and abundant (G5), but ranked as critically imperiled in Nevada (S1) based on a reliable occurrence report at a single site. In contrast, the endemic White River spinedace, *Lepidomeda albivallis*, is critically imperiled globally and thus, statewide (G1S1). The Southwestern Willow Flycatcher, *Empidonax traillii extimus*, has a rank of G5T2S1B, indicating the whole species (*Empidonax traillii*) is globally abundant, the subspecies is globally imperiled (T2) and critically imperiled in the state (S1), and finally, that it breeds (B) within Nevada. For symbol and rank details, see Column Definitions for Highest Priority Conservation Sites.

<sup>4</sup> For NNHP Scorecard purposes, a conservation site is the landscape unit defined by occurrences of at-risk species that are appropriately managed as a unit based on common biological, land-ownership, and conservation-planning criteria.

The Scorecard provides a means for tracking conservation successes and failures over time. In general, a highest priority site that scores as a lower priority in a subsequent Scorecard, and thus is removed from the list, indicates success in addressing management or protection needs of at-risk species or reflects new information

**Figure 2. Map of Scorecard 2000 Highest Priority Conservation Sites**



indicating the species are more widespread or secure. Less favorable is the removal of a site from the Scorecard list when the loss of an at-risk population or its essential habitat is considered irreversible. A site reassessed as a highest priority usually represent circumstances in which conservation urgency has increased. A site that remains on successive Scorecards may indicate natural resiliency to human pressure or perhaps risk that a conservation "failure" is imminent – in either case, there is a need for scrutiny. Tracking and examining changes or stasis in the state's list of most vulnerable biodiversity hotspots is part of the NNHP warning system.

The 2006 assessment resulted in adjustments to the Scorecard rank or parameters of a number of conservation sites. In Scorecard 2006, 69 sites ranked as highest priorities, three more than Scorecard 2000 (inset map). Dropping off the list were Blue Link Spring, Cold Springs, and Dolly Varden Spring sites, which did not meet the highest priority criteria after raising the protection urgency score in consideration of the remote



location and indications that the potential for serious threats were not imminent.<sup>5</sup> The six additional sites warranting inclusion in the 2006 update are Ash Meadows, Cain Spring, Condor Canyon, Fly Geyser, Toquop Wash, and Wall Canyon. The configuration of several Scorecard 2000 sites were realigned in Scorecard 2006 after taking into account updated species occurrence data and changes in their geospatial relationships.<sup>6</sup> Additionally, the names of several sites were modified to better reflect local place names. Detailed explanations for conservation site changes appear in Appendix 1, Changes to the Highest Priority Conservation Sites List from Scorecard 2000 to Scorecard 2006.

*Astragalus beatleyae* (Beatley's milkvetch), only in Nevada



Ranked G2S2 and listed as a federal species of concern, Beatley's milkvetch occurs in central Nevada on land managed by the U.S. Department of Energy (DOE). In the past, land use related to nuclear weapons testing threatened plant populations. Currently, they are monitored and avoided by the DOE. NNHP conservation sites generally do not rank as highest priority while management or protective measures keep risk of loss low. Photo by Frank Smith

The data-rich report that follows tabulates reams of details about each

Scorecard site, including the occurrences of at-risk species, the conservation rank of the species and site, the land management status, and more. In order to compactly present such a large amount of biological and geographic information, abbreviations and codes are used extensively (see following table, *Column Definitions for Highest Priority Conservation Sites*). The list of highest priority conservation sites and “companion sites” appear in alphabetical order in the NNHP Scorecard 2006 Site Summary List. A

*Cyprinodon diabolis* (Devils Hole pupfish)



*Cyprinodon diabolis*, male 1 cm.

The solitary wild population of *C. diabolis* survives in a spring cavern, Devils Hole, within Ash Meadows. It is endangered. Depletion of groundwater, vandalism and other human interaction are stressors. Illustration by Josette Gourley, Foresta Institute

“companion” conservation site also harbors at-risk species and is located near a highest priority site, but biological significance or vulnerability factors do not warrant the rank of ‘1’. By including companion sites, their conservation needs may be considered with those of nearby highest priority sites. Each site occurs within a “macrosite.” A macrosite is delineated as a buffer to account for uncertainty in biological knowledge or spatial data and an approximate management unit in which the protection or recovery needs of at-risk species may be sensibly addressed.

<sup>5</sup> Since the identified spring sites currently do not meet highest priority criteria and have been removed from the list, the corresponding macrosites were dropped also. Pilot Mountains, Gabbs Valley, and Antelope Valley (Elko/White Pine counties) are the names of the macrosites removed from the Scorecard list.

<sup>6</sup> For example, some species occurrences from the 2000 Las Vegas Metropolitan site were regrouped in 2006 with new data from the Las Vegas Wash area to form the North Las Vegas site. Two additional Scorecard sites occupy the Las Vegas Macrosite; Apex became a highest priority in 1998 and Corn Creek Springs in 2000. The Las Vegas Metro site did not make the 2006 list, reflecting irretrievable losses of rare taxa habitat.

The sites identified in Scorecard 2006 represent the NNHP's highest priorities for conservation of biodiversity because each contains one or more critically imperiled species. Many harbor the sole population of plants or animals that are not found anywhere else in the world and that occur in places where threatening or destructive forces may cause serious population loss or irretrievable degradation with a single catastrophic event. Undeniably, ours is a rapidly growing state in which natural resources and native habitats have been widely altered. While the potential for unfortunate consequences is serious in many places throughout Nevada, species extinctions or extirpations may not necessarily be inevitable.

The Scorecard process and report comprises one of the approaches the NNHP takes to examining biological data and to presenting the growing body of biodiversity knowledge for the use of planning and management agencies, private landowners and corporations, and conservation organizations – that is, the people who own, manage, and make decisions about our land and water. We invite you to the NNHP web site to view and make use of all our information sources on the biodiversity of Nevada at <http://heritage.nv.gov/index.htm>.

**Companion Conservation Sites –  
Soldier Meadows, Black Rock Desert Macrosite**



The Soldier Meadow 'companion' conservation site contains all known populations of five globally rare (G1S1) species, but is not a 'highest priority'. While biodiversity significance is outstanding (rank of 1), the rank of 2 was determined appropriate for protection and management urgency. At-risk populations within the Soldier Meadow Area of Critical Environmental Concern receive enhanced protection from the Bureau of Land Management and the U.S. Fish and Wildlife Service to sustain the threatened *Eremichthys acros* (desert dace) and two federal species of concern, *Pyrgulopsis notidicola* (elongate Mud Meadows spring-snail), and *Potentilla basaltica* (Soldier Meadow cinquefoil). Though remotely located at the Black Rock Desert's northern edge, outdoor recreation uses stress the thermal springs and wetlands. Water diversions, altered hydrology, and invasive weeds exacerbate the vulnerability of species and their habitats. Photo by Eric Miskow



# **NNHP SCORECARD 2006 SUMMARY LIST** **HIGHEST PRIORITY CONSERVATION SITES AND COMPANION SITES**

Page	<i>HIGHEST PRIORITY SITE</i> – or – Companion Site	Macrosite	Site Rank	Owners		Elevation (feet)	Max. Distance (miles)
				known	possible		
19	Alkali Flat	Big Smoky Valley North	B1 P2 M2	bp	fln	5480–6400	21.6
29	<i>APEX</i>	LAS VEGAS	B1 P1 M1	bd	np	1930–2520	7.1
17	<i>ASH MEADOWS</i>	AMARGOSA DESERT	B1 P1 M1	wbpk		2040–3900	16.6
22	<i>ASH SPRINGS/ PAHRANAGAT RIVER</i>	PAHRANAGAT VALLEY	B1 P1 M1	pb	w	3480–3800	4.9
30	Bennett Springs Wash	Meadow Valley Wash	B1 P2 M2	bp		4760–5145	3.8
48	<i>BIG JACK RANCH</i>	WHITE ROCK/ WILSON CREEK RANGE	B1 P1 M1	p		7000–7000	0.0
23	<i>BIG SPRINGS</i>	HAMLIN VALLEY	B1 P1 M1	p		5560–5560	1.5
18	<i>BIG/LAVA DUNE</i>	AMARGOSA DESERT	B1 P1 M1	b		2500–2800	5.0
27	Bitter Spring Valley	Lake Mead	B1 P2 M2	bkp	n	1467–2461	8.5
26	<i>BLACK CANYON SPRINGS</i>	LAKE MEAD	B1 P1 M1	k		675–920	3.2
37	Blue Eagle	Railroad Valley	B1 P2 M1	bp	n	4750–5300	4.2
26	<i>BLUE POINT, RODGERS, &amp; SURROUNDING SPRINGS</i>	LAKE MEAD	B1 P1 M1	k	nb	1427–2630	5.0
22	<i>BRADISH PRING/ WILLOMONTE RANCH</i>	CLOVER VALLEY	B1 P1 M1	p		5780–5800	1.1
48	Burnt Canyon Creek	White Rock/ Wilson Creek Range	B1 P2 M2	b		6700–6700	0.0
23	Butte Spring Hills	High Rock/ Hays Canyon Range	B2 P1 M1	pb		5300–5400	0.9
19	<i>CAIN SPRING</i>	AUGUSTA MOUNTAINS	B1 P1 M1	b	p	5440–5440	0.0
45	<i>CAMP SPRING</i>	WHITE RIVER VALLEY	B1 P1 M1	p		5180–5180	0.0
20	<i>CARICO LAKE SPRINGS</i>	CARICO LAKE VALLEY	B1 P1 M1	bp		5100–5320	1.4
21	Carson Range North	Carson Front	B1 P2 M2	fpl	b	5700–9100	9.7
19	<i>CHARNOCK RANCH</i>	BIG SMOKY VALLEY NORTH	B1 P1 M1	pb		5470–5495	0.5
36	<i>CHURCHILL NARROWS</i>	PINE NUT MOUNTAINS	B1 P1 M1	bp		4300–4600	3.6
41	Comins Lake	Steptoe Valley	B2 P1 M1	pb		6370–6841	13.3
36	Como (Pine Nut Mtns.)	Pine Nut Mountains	B2 P1 M2	p	b	5870–7000	3.8
30	<i>CONDOR CANYON</i>	MEADOW VALLEY WASH	B1 P1 M1	bp		4840–5110	1.5
20	<i>COOKS CREEK</i>	CARICO LAKE VALLEY	B1 P1 M1	b	p	5360–5360	0.0

## NNHP SCORECARD 2006 SUMMARY LIST

### HIGHEST PRIORITY CONSERVATION SITES AND COMPANION SITES

Page	<i>HIGHEST PRIORITY SITE</i> – or – Companion Site	Macrosite	Site Rank	Owners		Elevation (feet)	Max. Distance (miles)
				known	possible		
29	<i>CORN CREEK SPRINGS</i>	LAS VEGAS	B1 P1 M1	wp	db	2918–3880	6.2
37	<i>COYOTE SPRINGS</i>	PLEASANT VALLEY	B1 P1 M1	p		4720–4720	0.0
22	<i>CRITTENDEN SPRINGS</i>	DELANO MOUNTAINS	B1 P1 M1	p	n	5240–5280	1.1
37	Crows Nest	Railroad Valley	B1 P2 M2	b	pn	4860–4860	0.0
34	<i>CRYSTAL SPRINGS (LINCOLN CO)</i>	PAHRANAGAT VALLEY	B1 P1 M1	p	nb	3820–4000	0.3
37	Currant	Railroad Valley	B1 P2 M1	bf	n	4770–6040	16.6
41	<i>CURRIE</i>	STEPTOE VALLEY	B1 P1 M1	pb	n	5870–6348	5.6
20	<i>DARROUGHS HOT SPRINGS</i>	BIG SMOKY VALLEY NORTH	B1 P1 M1	p	f	5600–5600	0.0
36	Double Spring Flat	Pine Nut Mountains	B1 P1 M2	pb	nf	5550–5950	5.9
38	<i>DUCKWATER SPRINGS</i>	RAILROAD VALLEY	B1 P1 M1	ipb		3380–5610	4.0
25	<i>EAGLE FLAT</i>	KNOLL MOUNTAIN	B1 P1 M1	b	n	5700–6100	3.2
25	Eagle Flat South	Knoll Mountain	B2 P1 M1	b	n	5900–5970	2.7
30	Echo Canyon Reservoir SRA	Meadow Valley Wash	B1 P2 M2	pn	b	5261–5500	4.5
45	<i>EMIGRANT SPRINGS</i>	WHITE RIVER VALLEY	B1 P1 M1	p		5180–5180	0.0
23	<i>FISH CREEK SPRINGS</i>	FISH CREEK VALLEY	B1 P1 M1	bp		6020–6550	12.7
20	<i>FLY GEYSER</i>	BLACK ROCK DESERT	B1 P1 M1	pb		4000–4010	0.1
26	Gale Hills	Lake Mead	B1 P2 M2	kbp	n	1240–2490	12.0
21	<i>GALENA CREEK COUNTY PARK</i>	CARSON FRONT	B1 P1 M1	cfp	n	6035–6545	0.9
38	Gouge Eye Well	Lake Valley	B2 P2 M1	bp		5915–5922	3.4
45	Hardy Springs	White River Valley	B2 P1 M1	p		5300–5380	0.5
34	<i>HIKO</i>	PAHRANAGAT VALLEY	B1 P1 M1	pn	b	3830–4000	2.5
23	Hog Ranch Mountain	High Rock / Hays Canyon Range	B1 P2 M2	spb		4600–7000	14.5
27	Hoover Dam Refugia	Lake Mead	B1 P2 M2	k		722–1510	0.4
24	<i>HOT CREEK</i>	HOT CREEK VALLEY/PALISADE	B1 P1 M1	bp		5050–5200	5.9
25	<i>HOT SPRING HILL</i>	KOBEH VALLEY	B1 P1 M1	bn		6060–6130	6.3



## NNHP SCORECARD 2006 SUMMARY LIST

### HIGHEST PRIORITY CONSERVATION SITES AND COMPANION SITES

Page	HIGHEST PRIORITY SITE – or – Companion Site	Macrosite	Site Rank	Owners		Elevation (feet)	Max. Distance (miles)
				known	possible		
41	INDIAN RANCH	STEPTOE VALLEY	B1 P1 M1	bp		6000–8038	4.6
27	Lake Mead (Aquatic)	Lake Mead	B1 P1 M2	n	k	1180–1180	0.0
28	LAKE TAHOE (AQUATICS)	LAKE TAHOE BASIN	B1 P1 M1	n	t	6000–6000	0.0
28	Lake Tahoe (Beach)	Lake Tahoe Basin	B1 P1 M2	ptn		6224–6230	19.2
28	LAKE VALLEY SPRINGS	LAKE VALLEY	B1 P1 M1	p		5080–5960	2.9
38	LOCKES	RAILROAD VALLEY	B1 P1 M1	bpn		4715–6070	17.2
24	Lost Creek Ranch	High Rock/Hays Canyon Range	B2 P1 M1	sp		4980–5500	6.4
46	LUND	WHITE RIVER VALLEY	B1 P1 M1	p		5598–5600	0.0
46	Lund Southwest	White River Valley	B1 P2 M2	bp		5395–5420	1.2
42	McGill	Steptoe Valley	B1 P2 M1	pb		6030–6220	6.7
23	MCNETT RANCH	FISH LAKE VALLEY	B1 P1 M1	p		4795–4880	4.5
44	Mesquite Uplands	Virgin Valley	B2 P1 M1	b	pn	1607–1952	4.1
36	Mineral Valley	Pine Nut Mountains	B1 P1 M2		bp	6360–6360	0.0
31	MOAPA NWR/WARM SPRINGS	MOAPA VALLEY	B1 P1 M1	pwn	b	1172–1830	2.8
42	MONTE NEVA HOT SPRINGS	STEPTOE VALLEY	B1 P1 M1	pb		5938–6000	1.0
46	MOON RIVER SPRING	WHITE RIVER VALLEY	B1 P1 M1	p		5188–5188	0.0
46	MOORMAN SPRING	WHITE RIVER VALLEY	B1 P1 M1	pb		5265–5305	3.7
46	Moorman Spring SE	White River Valley	B1 P2 M2	bnp		5190–5470	11.2
21	Mt Rose	Carson Front	B1 P2 M2	pflnt	b	6300–10560	6.9
32	MUDDY RIVER CORRIDOR AND UPLANDS	MOAPA VALLEY	B1 P1 M1	bnpkri		1000–2400	20.0
29	Nellis AFB	Las Vegas	B1 P2 M1	pdn	b	1808–1980	2.1
39	NEVADA CENTRAL MINE	RENO/PEAVINE	B1 P1 M1	fp	b	5480–6330	1.7
30	NORTH LAS VEGAS	LAS VEGAS	B1 P1 M1	pb		1992–2330	7.4
27	Overton Arm	Lake Mead	B1 P1 M2	knpb	r	1200–1970	25.2
35	PAHRANAGAT NWR	PAHRANAGAT VALLEY	B1 P1 M1	wb		3160–3400	9.8
35	PAHRUMP	PAHRUMP VALLEY	B1 P1 M1	bp		2490–4094	14.9

# **NNHP SCORECARD 2006 SUMMARY LIST** **HIGHEST PRIORITY CONSERVATION SITES AND COMPANION SITES**

Page	<i>HIGHEST PRIORITY SITE</i> – or – Companion Site	Macrosite	Site Rank	Owners		Elevation (feet)	Max. Distance (miles)
				known	possible		
30	Panaca	Meadow Valley Wash	B2 P1 M1	pb		4750–4900	1.7
39	<b>PANTHER/SUN VALLEY</b>	<b>RENO/PEAVINE</b>	<b>B1 P1 M1</b>	<b>pbn</b>		<b>4780–5320</b>	<b>1.6</b>
39	Peavine Peak	Reno/Peavine	B1 P1 M2	pf	b	5240–7800	6.0
40	<b>PERSONS SPRING</b>	<b>RUBY VALLEY</b>	<b>B1 P1 M1</b>	<b>pb</b>	<b>fln</b>	<b>6102–6440</b>	<b>15.7</b>
36	Pine Nut Creek	Pine Nut Mountains	B1 P2 M2	b	p	5320–5700	1.8
48	<b>PRATHER SPRINGS</b>	<b>WINDERMERE HILLS</b>	<b>B1 P1 M1</b>	<b>p</b>		<b>5920–5920</b>	<b>0.0</b>
46	<b>PRESTON</b>	<b>WHITE RIVER VALLEY</b>	<b>B1 P1 M1</b>	<b>pbn</b>		<b>5600–6320</b>	<b>8.1</b>
28	<b>RABBIT CREEK</b>	<b>LAMOILLE/PLEASANT VALLEY</b>	<b>B1 P1 M1</b>	<b>p</b>	<b>n</b>	<b>5600–5700</b>	<b>0.8</b>
39	Railroad Valley North	Railroad Valley	B1 P2 M1	bp		5750–6120	10.4
40	<b>RALEIGH HEIGHTS</b>	<b>RENO/PEAVINE</b>	<b>B1 P1 M1</b>	<b>fp</b>	<b>b</b>	<b>5060–5880</b>	<b>2.6</b>
40	Reno Metropolitan	Reno/Peavine	B3 P1 M1	pnb		4380–4700	5.9
44	Riverside	Virgin Valley	B1 P2 M1	pb	n	1400–1750	1.9
47	<b>RUPPES PLACE/BOGHOLE</b>	<b>WHITE RIVER VALLEY</b>	<b>B1 P1 M1</b>	<b>pb</b>		<b>5350–5630</b>	<b>5.7</b>
43	<b>SAND MOUNTAIN</b>	<b>STILLWATER RANGE</b>	<b>B1 P1 M1</b>	<b>b</b>	<b>pd</b>	<b>3895–4650</b>	<b>7.3</b>
28	Sixmile Well	Lake Valley	B1 P2 M2	bp		5500–5800	6.6
36	Slaters Mine	Pine Nut Mountains	B1 P2 M2	bp		6990–8550	3.4
22	Snow Valley	Carson Front	B1 P2 M2	pf	bn	5400–7500	5.8
41	<b>SODAVILLE</b>	<b>SODA SPRING VALLEY</b>	<b>B1 P1 M1</b>	<b>p</b>		<b>4635–4705</b>	<b>0.3</b>
20	Soldier Meadow	Black Rock Desert	B1 P2 M2	bp		4330–4830	4.3
22	Spooner Summit	Carson Front	B2 P2 M1	fpn	t	5600–7850	2.5
42	<b>STEPTOE RANCH</b>	<b>STEPTOE VALLEY</b>	<b>B1 P1 M1</b>	<b>p</b>	<b>b</b>	<b>6037–6140</b>	<b>2.9</b>
39	Stewart Valley (Nye Co.)	Pahrump Valley	B1 P2 M2	bp		2297–2700	5.6
37	Sugar Loaf (Pine Nut Mtns.)	Pine Nut Mountains	B1 P1 M2	p	b	6880–7000	0.1
19	<b>SULLIVAN SPRING</b>	<b>ANTELOPE VALLEY</b>	<b>B1 P1 M1</b>	<b>p</b>	<b>f</b>	<b>6800–6800</b>	<b>0.0</b>
40	Sulphur Hot Springs	Ruby Valley	B1 P2 M1	pb	fln	6102–6440	15.7
47	<b>SUNNYSIDE/KIRCH WMA</b>	<b>WHITE RIVER VALLEY</b>	<b>B1 P1 M1</b>	<b>nbp</b>		<b>5150–5320</b>	<b>11.6</b>



# **NNHP SCORECARD 2006 SUMMARY LIST** **HIGHEST PRIORITY CONSERVATION SITES AND COMPANION SITES**

Page	<i>HIGHEST PRIORITY SITE</i> – or – Companion Site	Macrosite	Site Rank	Owners		Elevation (feet)	Max. Distance (miles)
				known	possible		
24	Table Lakes	High Rock/Hays Canyon Range	B1 P2 M2	sp		5680–6280	5.6
33	<b>THACKER PASS</b>	<b>MONTANA MTN.S/ DOUBLE H MTN.S</b>	<b>B1 P1 M1</b>	<b>p</b>	<b>n</b>	<b>4440–4560</b>	<b>0.2</b>
48	<b>THE COVE</b>	<b>WHITE RIVER VALLEY</b>	<b>B1 P1 M1</b>	<b>pb</b>		<b>5940–6200</b>	<b>3.3</b>
43	Thousand Springs Valley	Thousand Springs Valley/Creek	B2 P1 M1	p		5480–6040	11.6
44	<b>TOQUOP WASH</b>	<b>VIRGIN VALLEY</b>	<b>B1 P1 M1</b>	<b>b</b>		<b>1540–1936</b>	<b>3.9</b>
43	<b>TWENTYONE MILE RANCH</b>	<b>THOUSAND SPRINGS VALLEY/CREEK</b>	<b>B1 P1 M1</b>	<b>p</b>	<b>b</b>	<b>5160–5210</b>	<b>4.8</b>
43	<b>TWIN SPRINGS</b>	<b>STEPTOE VALLEY</b>	<b>B1 P1 M1</b>	<b>p</b>		<b>6200–6200</b>	<b>0.0</b>
44	<b>VIRGIN RIVER CORRIDOR</b>	<b>VIRGIN VALLEY</b>	<b>B1 P1 M1</b>	<b>np</b>	<b>bk</b>	<b>1220–1575</b>	<b>17.1</b>
45	Virgin River Uplands	Virgin Valley	B1 P2 M1	bpnkr		1100–2182	10.8
24	<b>WALL CANYON</b>	<b>HIGH ROCK/ HAYS CANYON RANGE</b>	<b>B1 P1 M1</b>	<b>sp</b>		<b>5100–5700</b>	<b>14.0</b>
22	<b>WARM CREEK RANCH</b>	<b>CLOVER VALLEY</b>	<b>B1 P1 M1</b>	<b>pb</b>		<b>5800–5800</b>	<b>0.0</b>
24	Warm Springs	Hot Creek Valley/Palisade	B1 P2 M2	b		5300–5760	12.7
25	<b>WARM SPRINGS RANCH (ELKO CO)</b>	<b>INDEPENDENCE VALLEY</b>	<b>B1 P1 M1</b>	<b>pb</b>		<b>5615–5615</b>	<b>0.0</b>
33	<b>WARM SPRINGS VALLEY (WASHOE CO)</b>	<b>PAH RAH RANGE</b>	<b>B1 P1 M1</b>	<b>bp</b>		<b>4248–4265</b>	<b>1.4</b>
41	<b>WILLOW/HOT CREEKS</b>	<b>SANTA RENIA MOUNTAINS</b>	<b>B1 P1 M1</b>	<b>pb</b>		<b>5270–5600</b>	<b>5.1</b>
22	Yellow Rock Canyon	High Rock/Hays Canyon Range	B1 P2 M2	s		5080–5600	5.3

## COLUMN DEFINITIONS FOR HIGHEST PRIORITY CONSERVATION SITES

### Site names and ranks:

#### Site **B**iodiversity Significance:

- 1 Outstanding significance (only known or highest quality population of a G1 or T1 taxon; concentration of higher quality G1/T1, G2/T2, or declining taxa).
- 2 Very high significance (lower quality G1/T1; higher quality G2/T2 or G3/T3; concentration of moderate quality G2/T2, G3/T3, or declining taxa).
- 3 High significance (lower quality G2/T2; higher quality G3/T3; concentration of high quality S1 taxa).
- 4 Moderate significance (lower quality G3/T3; higher quality or only S1 population; highest quality S2; concentration of higher quality S2 or S3s).
- 5 Of general biodiversity interest or open space.

#### Site **P**rotection Urgency:

- 1 Good chance of being immediately threatened (within 1 year of rank date) by severely destructive forces.
- 2 Threat expected within 5 years.
- 3 Definable threat, but not in next 5 years.
- 4 No threat known for foreseeable future.
- 5 Land protection complete or adequate reasons exist not to protect the site.

#### Site **M**anagement Urgency:

- 1 Loss or irretrievable degradation of populations could occur within 1 year without immediate new, or ongoing annual, management.
- 2 Loss of populations could occur within 5 years without new or ongoing management action.
- 3 Quality of populations could degrade within 5 years without new or ongoing management action.
- 4 Although not currently threatened, management may be needed in the future to maintain current quality of populations.
- 5 No serious management needs known or anticipated at site.

Code: Nevada Natural Heritage Program internal code for the site.

### Land Ownership Symbols:

These symbolize the major land-management categories in which the site is known to occur in Nevada, roughly in descending order of predominance for the site. These **cannot be guaranteed** to be either complete or entirely accurate, and are intended only for general information purposes. **Owners known** are those for which we have documentation, and **possible** are uncertain and/or nearby.

- b** Bureau of Land Management (US Department of the Interior), Nevada districts.
- c** **County land or right-of-way.**
- d** US Department of **D**efense (Fallon, Hawthorne, Nellis, or Wendover).
- e** US Department of **E**nergy (primarily Nevada Test Site).
- f** Forest Service (US Department of Agriculture), Humboldt-Toiyabe **National Forest (Region 4).**
- i** **Indian reservations and colonies.**
- k** National **P**ark Service (US Department of the Interior; Death Valley, Great Basin, Lake Mead).
- l** Wilderness areas (all agencies).
- m** **Municipal land or right-of-way.**
- n** State of Nevada (parks, transportation corridors, university, waters, wildlife management areas).
- p** **Private.**
- r** Bureau of **R**eclamation (US Department of the Interior).
- s** Bureau of Land Management (US Department of the Interior), California resource areas.
- t** Forest Service (US Department of Agriculture), Lake **T**ahoe Basin Management Unit (Region 5).
- w** Fish and **W**ildlife Service (US Department of the Interior; wildlife ranges and refuges).
- y** Forest Service (US Department of Agriculture), Inyo National Forest (Region 5).

Elevation: range in feet for all occurrences belonging to the site.

Max. distance: the greatest distance between any two occurrences belonging to the site (to indicate the approximate size of the site).

## COLUMN DEFINITIONS FOR HIGHEST PRIORITY CONSERVATION SITES

### Nevada Natural Heritage Program Global (**Grank**) and State (**Srank**) Element Ranks for Threats and/or Vulnerability:

G	Global rank indicator, based on worldwide distribution at the species level
T	Global trinomial rank indicator, based on worldwide distribution at the infraspecific level
S	State rank indicator, based on distribution within Nevada at the lowest taxonomic level
1	Critically imperiled due to extreme rarity, imminent threats, or biological factors
2	Imperiled due to rarity or other demonstrable factors
3	Rare and local throughout its range, or with very restricted range, or otherwise vulnerable to extinction
4	Apparently secure, though frequently quite rare in parts of its range, especially at its periphery
5	Demonstrably secure, though frequently quite rare in parts of its range, especially at its periphery
A	Accidental
B	Breeding status within NV (excludes resident taxa)
E	Exotic or introduced
H	Of historical occurrence and could be rediscovered
N	Non-breeding status within NV (excludes resident taxa)
P	Potential
Q	Taxonomic status uncertain
U	Unrankable – present, insufficient data to estimate rank
X	Believed extinct or extirpated within Nevada
?	Assigned rank uncertain

### Population Trend (**Trnd**) of Taxon in Nevada (when known):

\\ Declining rapidly      \ Declining      = Stable

### Occurrences at **Site/Total** Documented Occurrences in Nevada.

### U. S. Fish and Wildlife Service (**Usfws**) Categories for Listing under the Endangered Species Act:

LE	Listed Endangered - in danger of extinction in all or a significant portion of its range
LT	Listed Threatened - likely to be classified as Endangered in the foreseeable future if present trends continue
PE	Proposed Endangered
PT	Proposed Threatened
C	Candidate
<C1	Former Category 1 Candidate, now species of concern
<C2	Former Category 2 Candidate, now species of concern

_SA	Similarity of appearance species
RA	Former Candidate species without status – found to be more abundant
RI	Former Candidate species without status – lack of evidence of vulnerability
(PS)	Partial status in part of range
_NL	Not listed in parts of its range
_XN	Extinct in parts of its range

### Bureau of Land Management (**Blm**) Species Classification:

S	Nevada Special Status Species - USFWS listed, proposed or candidate for listing, or protected by Nevada state law
N	Nevada Special Status Species - designated Sensitive, State Office
C	California Special Status Species (see definition S and N)
P	Proposed Nevada Special Status Species – designated Sensitive, State Office

### United States Forest Service (**Usfs**) Species Classification:

S	Region 4 (Humboldt-Toiyabe) sensitive species
I	Region 5 (Inyo) sensitive species
W	Region 5 (Inyo) watch species
P	Region 5 (Inyo) proposed watch or sensitive species
L	Region 5 (Lake Tahoe Basin Management Unit - LTBMU) sensitive species
C	Region 5 sensitive species not yet known from Inyo NF or LTBMU
E	USFWS listed Endangered
T	USFWS listed Threatened

### Nevada State Protected (**State**) Species Classification:

#### Fauna:

YES	Species protected under NRS 501.
-----	----------------------------------

#### Flora:

CE	Critically endangered - species threatened with extinction, whose survival requires assistance because of overexploitation, disease or other factors or because their habitat is threatened with destruction, drastic modification or severe curtailment (NRS 527.260-.300)
CE#	Recommended for listing as critically endangered
CY	Protected as a cactus, yucca, or Christmas tree (NRS 527.060-.120)

### Endemic (**Ndm**) status:

Y	Found naturally only within the State of Nevada
P	Probable endemic of Nevada

### Most Recent Year (**Year**) of Taxon Observation at Each Site / Most Recent Survey Year of Taxon at Each Site (if survey year is later than observation year)



# SCORECARD 2006

## SITE LIST



Rare species occurring within Sand Mountain dune habitats include scarabs, a butterfly, and a sunflower; in the Stillwater Range Macrosite. Photo by Eric Peterson



Site information	Grank	Srank	Trnd	Site/Total	Scientific and common names	Usfws	Blm	Usfs	State	Ndm	Year
AMARGOSA DESERT MACROSITE											
Site: <b>ASH MEADOWS</b>	G1	S1		(1/1)	Ambrysus amargosus	LT	S			Y	1986
Ranks: B1 P1 M1 Code: S.USNVF0*13					(Ash Meadows naucorid)						
Owners known: wbpk possible:	G3	S3	\	(7/130)	Arctomecon merriamii	xC2	N	S			1994
Elev.: 2040-3900 ft. Max. distance: 16.6 mi.					(white bearpoppy)						
Co(s): Nye	G2	S2		(13/13)	Astragalus phoenix	LT	S		CE	Y	1986
					(Ash Meadows milkvetch)						
	G2	S1	\	(1/4)	Calochortus striatus	xC2	N, C	C			1986
					(alkali mariposa lily)						
	G20	S2		(22/22)	Centaurium namophilum	LT	S		CE	Y	1996
					(spring-loving centaury)						
	G2	S2		(8/10)	Cordylanthus tecopensis	xC2	N, C				1986/1996
					(Tecopa birdbeak)						
	G4	S3B	\	(1/87)	Corynorhinus townsendii		N, C	S, I, L			1951
					(Townsend's big-eared bat)						
	G1	S1	\	(3/3)	Cyprinodon diabolis	LE	S		YES	Y	1996
					(Devil's Hole pupfish)						
	G2T2	S2	=	(15/15)	Cyprinodon nevadensis mionectes	LE	S		YES	Y	2002
					(Ash Meadows Amargosa pupfish)						
	G2T1	S1	=	(5/5)	Cyprinodon nevadensis pectoralis	LE	S		YES	Y	1989
					(Warm Springs Amargosa pupfish)						
	G5T1T2	S1B		(3/17)	Empidonax traillii extimus	LE	S	E	YES		2003
					(Southwestern Willow Flycatcher)						
	G5T2	S2		(16/17)	Enceliopsis nudicaulis var. corrugata	LT	S		CE	P	1996
					(Ash Meadows sunray)						
	G2?	S1		(1/4)	Eriogonum contiguum						1971
					(Amargosa buckwheat)						
	G2	S2		(18/18)	Grindelia fraxinopratisensis	LT	S		CE		1996
					(Ash Meadows gumplant)						
	G4T4	S2	=	(1/76)	Heloderma suspectum cinctum	xC2NL	N, C		YES		1977
					(banded Gila monster)						
	G3T1T2	S1S2		(9/9)	Ivesia kingii var. eremica	LT	S		CE	Y	1986
					(Ash Meadows mousetails)						
	G10	S1		(8/8)	Mentzelia leucophylla	LT	S		CE	Y	1986
					(Ash Meadows blazingstar)						
	G5TH	SH		(2/2)	Microtus montanus nevadensis	xC2	N			Y	1933
					(Ash Meadows montane vole)						
	G1	S1		(3/3)	Nitrophila mohavensis	LE	S		CE		1998
					(Amargosa niterwort)						
	G1G3T1	S1		(1/1)	Pelocoris shoshone amargosus						1987
					(Amargosa naucorid)						
	G4T3	S2		(1/21)	Penstemon fruticiformis ssp. amargosae	xC2	N, C	S			1907
					(Death Valley beardtongue)						

Site information	Grank	Srank	Trnd	Site/Total	Scientific and common names	Usfws	Blm	Usfs	State	Ndm	Year
ASH MEADOWS (cont.)	G5	S3B		(1/5)	Plegadis chihi (White-faced Ibis)	xC2	P		YES		1986
	G1	S1		(1/1)	Pyrgulopsis crystalis (Crystal Spring springsnail)	xC2				Y	1986
	G1	S1		(1/1)	Pyrgulopsis erythropoma (Ash Meadows pebblesnail)	xC2				Y	1986
	G1	S1		(1/1)	Pyrgulopsis fairbanksensis (Fairbanks springsnail)	xC2				Y	1986
	G1	S1		(1/1)	Pyrgulopsis isolata (elongate-gland springsnail)	xC2				Y	1986
	G3	S2		(14/18)	Pyrgulopsis micrococcus (Oasis Valley pyrg)	xC2	N				1986
	G1	S1		(4/4)	Pyrgulopsis nanus (distal-gland springsnail)	xC2				Y	1994
	G1	S1		(3/3)	Pyrgulopsis pisteri (median-gland Nevada springsnail)	xC2				Y	1986
	G5T?	S1		(1/7)	Rallus longirostris yumanensis (Yuma Clapper Rail)	LE			YES		1999/ 2000
	G5T1	S1	=	(3/3)	Rhinichthys osculus nevadensis (Ash Meadows speckled dace)	LE	S		YES	Y	2002
	G2G3Q	S1		(3/3)	Sisyrinchium funereum (Death Valley blue-eyed grass)						1979
	G1	S1		(15/15)	Spiranthes infernalis (Ash Meadows lady's tresses)	xC2				Y	1998
	G?T1	S1		(5/5)	Stenelmis calida calida (Devils Hole warm spring riffle beetle)	xC2	N			Y	1998
	G5	S4B	=	(1/23)	Tadarida brasiliensis (Brazilian free-tailed bat)		N				1964
	G1	S1		(3/3)	Tryonia angulata (sportinggoods tryonia)	xC2				Y	1986
	G1	S1		(2/2)	Tryonia elata (Point of Rocks tryonia)	xC2				Y	1985
	G1	S1		(2/2)	Tryonia ericae (minute tryonia)	xC2				Y	1985
	G2	S2		(16/16)	Tryonia variegata (Amargosa tryonia)	xC2	N				1986
	G1	S1		(1/1)	Aegialia magnifica (Large aegialian scarab)	xC2	N			Y	1975
	G1	S1		(1/1)	Miloderes sp. (unnamed) (Big Dune miloderes weevil)	xC2	N			Y	1982/ 1994
	G1	S1		(2/2)	Pseudocotalpa giuliani (Giuliani's dune scarab)	xC2	N			Y	1983

Site: **BIG/LAVA DUNE**

Ranks: B1 P1 M1 Code: S.USWR01\*1019  
 Owners known: b possible:  
 Elev.: 2500-2800 ft. Max. distance: 5.0 mi.  
 Co(s): Nye

Site information	Grank	Srank	Trnd	Site/Total	Scientific and common names	Usfws	Blm	Usfs	State	Ndm	Year
------------------	-------	-------	------	------------	-----------------------------	-------	-----	------	-------	-----	------

## ANTELOPE VALLEY (EUREKA CO) MACROSITE

Site: <b>SULLIVAN SPRING</b>	G1	S1	(1/1)	Pyrgulopsis pelliata (Antelope Valley springsnail)						Y	1994
Ranks: B1 P1 M1											
Code: S.USNVHP*585											
Owners known: p											
possible: f											
Elev.: 6800-6800 ft.											
Max. distance: 0.0 mi.											
Co(s): Eureka											

## AUGUSTA MOUNTAINS MACROSITE

Site: <b>CAIN SPRING</b>	G1	S1	(1/1)	Pyrgulopsis augustae (elongate Cain Spring pyrg)		N				Y	2001
Ranks: B1 P1 M1											
Code: S.USNVHP*579											
Owners known: b											
possible: p											
Elev.: 5440-5440 ft.											
Max. distance: 0.0 mi.											
Co(s): Lander											

## BIG SMOKY VALLEY NORTH MACROSITE

Site: <b>ALKALI FLAT</b>	G2Q	S2	(1/29)	Asclepias eastwoodiana (Eastwood milkweed)	xC2	N	S			Y	1932
Ranks: B1 P2 M2											
Code: S.USWR01*1527											
Owners known: bp											
possible: fln											
Elev.: 5480-6400 ft.											
Max. distance: 21.6 mi.											
Co(s): Nye, Lander											
	G4	S3	\\ (1/112)	Brachylagus idahoensis (pygmy rabbit)	xC2	N			YES		1946
	G5T1	S1	(1/1)	Cercyonis oetus alkalorum (Big Smoky wood nymph)		N				Y	1990
	G2Q	S2	(1/31)	Eriogonum beatleyae (Beatley buckwheat)							1944
	G4T1	S1	(1/1)	Gila bicolor ssp. (unnamed) (Big Smoky Valley tui chub)	xC2	N			YES	Y	1991
	G4	S2S3	(6/37)	Opuntia pulchella (sand cholla)					CY		1979
	G3?	S3?	(1/10)	Oxytheca watsonii (Watson spinecup)							1993
	G5T2	S2	(2/10)	Polites sabuleti basinensis (pallid skipper)						Y	1984
	G4T?Q	S2S3	\= (2/126)	Rana luteiventris pop (Columbia spotted frog (Great Basin pop	C		S	S			1938
Site: <b>CHARNOCK RANCH</b>	G4T1Q	S1	(4/4)	Gila bicolor ssp. (unnamed) (Charnock Springs tui chub)						Y	1999
Ranks: B1 P1 M1											
Code: S.USNVHP*345											
Owners known: pb											
possible:											
Elev.: 5470-5495 ft.											
Max. distance: .5 mi.											
Co(s): Nye											

Site information	Grank	Srank	Trnd	Site/Total	Scientific and common names	Usfws	Blm	Usfs	State	Ndm	Year
Site: <b>DARROUGHS HOT SPRINGS</b> Ranks: B1 P1 M1 Code: S.USWR01*880 Owners known: p possible: f Elev.: 5600-5600 ft. Max. distance: 0.0 mi. Co(s): Nye	G5T1	S1		(1/4)	Rhinichthys osculus lari versi (Big Smoky Valley speckled dace)		N		YES	Y	1984

#### BLACK ROCK DESERT MACROSITE

Site: <b>FLY GEYSER</b> Ranks: B1 P1 M1 Code: S.USNVHP*680 Owners known: pb possible: Elev.: 4000-4010 ft. Max. distance: .1 mi. Co(s): Washoe	G4T3	S1B	\	(1/26)	Charadrius alexandrinus nivosus (Western Snowy Plover)	LTNL	N		YES		1993
	G1	S1		(1/1)	Pyrgulopsis bruesi (Fly Ranch pyrg)		N			Y	1997
Site: <b>SOLDIER MEADOW</b> Ranks: B1 P2 M2 Code: S.USNVF0*6 Owners known: bp possible: Elev.: 4330-4830 ft. Max. distance: 4.3 mi. Co(s): Humboldt	G1	S1	=	(11/11)	Eremichthys acros (desert dace)	LT	S		YES	Y	1996
	G1	S1		(9/9)	Potentilla basaltica (Soldier Meadow cinquefoil)	C	S, C				1990
	G1	S1		(2/2)	Pyrgulopsis limaria (squat Mud Meadows pyrg)		N			Y	1998
	G1	S1		(1/2)	Pyrgulopsis militaris (northern Soldier Meadow pyrg)		N			Y	1978
	G1	S1		(1/1)	Pyrgulopsis notidicola (elongate Mud Meadows springsnail)	C	S			Y	1979
	G1	S1		(1/1)	Pyrgulopsis umbilicata (southern Soldier Meadow pyrg)		N			Y	1978
	G4T?Q	S2S3	\=	(1/126)	Rana luteiventris pop (Columbia spotted frog (Great Basin pop	C	S	S			1942

#### CARICO LAKE VALLEY MACROSITE

Site: <b>CARICO LAKE SPRINGS</b> Ranks: B1 P1 M1 Code: S.USNVHP*582 Owners known: bp possible: Elev.: 5100-5320 ft. Max. distance: 1.4 mi. Co(s): Lander	G1	S1		(1/2)	Pyrgulopsis basiglans (Large gland Carico pyrg)		N			Y	1998
	G1	S1		(1/1)	Pyrgulopsis bifurcata (small gland Carico springsnail)					Y	1991
Site: <b>COOKS CREEK</b> Ranks: B1 P1 M1 Code: S.USNVHP*583 Owners known: b possible: p Elev.: 5360-5360 ft. Max. distance: 0.0 mi. Co(s): Lander	G1	S1		(1/2)	Pyrgulopsis basiglans (Large gland Carico pyrg)		N			Y	1991



Site information	Grank	Srank	Trnd	Site/Total	Scientific and common names	Usfws	Blm	Usfs	State	Ndm	Year
CARSON FRONT MACROSITE											
Site: CARSON RANGE NORTH	G3T20	S2		(9/39)	Arabis rigidissima var. demota			S, L			1989
Ranks: B1 P2 M2 Code: S.USNVHP*476					(Galena Creek rockcress)						
Owners known: fpl possible: b	G2G3	S2S3	\	(2/130)	Eriogonum robustum		N			Y	1998
Elev.: 5700-9100 ft. Max. distance: 9.7 mi.					(altered andesite buckwheat)						
Co(s): Washoe	G2T2	S1	\	(4/7)	Ivesia aperta var. aperta	xC2	N, C	S, C			2000
					(Sierra Valley mousetails)						
	G2	S1	\	(1/8)	Ivesia webberi	C	S, C	S, C	CE		1997
					(Webber ivesia)						
	G4G5	S2B		(1/17)	Myotis thysanodes	xC2	N, C				1995
					(fringed myotis)						
	G4T3	S3		(1/138)	Oncorhynchus clarkii henshawi	LT	S	T	YES		1990
					(Lahontan cutthroat trout)						
	G5T30	S1		(3/6)	Pinus ponderosa ssp. washoensis		N		CY		1996
					(Washoe pine)						
	G2G3	S2S3	\	(2/11)	Plagiobothrys glomeratus		N			Y	1998
					(altered andesite popcornflower)						
	G3T1	S1	\	(1/13)	Speyeria nokomis carsonensis	xC2	N				1958
					(Carson Valley silverspot)						
Site: GALENA CREEK COUNTY PARK	G4G5T10	S1		(5/8)	Arabis rectissima var. simulans					P	2005
Ranks: B1 P1 M1 Code: S.USNVHP*242					(Washoe tall rockcress)						
Owners known: cfp possible: n											
Elev.: 6035-6545 ft. Max. distance: .9 mi.											
Co(s): Washoe											
Site: MT ROSE	G3T20	S2		(22/39)	Arabis rigidissima var. demota			S, L			2003
Ranks: B1 P2 M2 Code: S.USNVHP*620					(Galena Creek rockcress)						
Owners known: pfInt possible: b	G2	S1		(2/2)	Arabis tiehmii	xC2		I			1993
Elev.: 6300-10560 ft. Max. distance: 6.9 mi.					(Tiehm rockcress)						
Co(s): Washoe	G4T2	S1		(6/11)	Draba asterophora var. asterophora			S, I, L			2003
					(Tahoe draba)						
	G5	S1		(2/2)	Meesia triquetra			L			2003
					(three-ranked humpmoss)						
	G4T3	S3		(2/138)	Oncorhynchus clarkii henshawi	LT	S	T	YES		1990
					(Lahontan cutthroat trout)						
	G5T30	S1		(1/6)	Pinus ponderosa ssp. washoensis		N		CY		1994
					(Washoe pine)						
	G1?	S1		(1/1)	Stenamma wheelerorum					Y	1967
					(endemic ant)						

Site information	Grank	Srank	Trnd	Site/Total	Scientific and common names	Usfws	Blm	Usfs	State	Ndm	Year
Site: SNOW VALLEY Ranks: B1 P2 M2 Code: S. USWR01*843 Owners known: pf possible: bn Elev.: 5400-7500 ft. Max. distance: 5.8 mi. Co(s): Carson City	G5T3	S1	\=	(1/3)	Aplodontia rufa californica (Mono Basin mountain beaver)	xC2NL			YES		1946
	G1	S1		(1/1)	Orthotrichum shevockii (Shevock bristlemoss)		C				2002
	G3T1	S1	\	(2/13)	Speyeria nokomis carsonensis (Carson Valley silverspot)	xC2	N				1965
Site: SPOONER SUMMIT Ranks: B2 P2 M1 Code: S. USNVHP*479 Owners known: fpn possible: t Elev.: 5600-7850 ft. Max. distance: 2.5 mi. Co(s): Douglas, Carson City	G4G5T1Q	S1		(2/8)	Arabis rectissima var. simulans (Washoe tall rockcress)					P	1996
	G5T3T4	S2S3	=	(1/6)	Elgaria coerulea palmeri (Sierra alligator lizard)		N				1993
	G5T3?	S1		(1/8)	Euphydryas editha monoensis (Mono checkerspot)	xC2	N				1990
	G5T3T4Q	S3		(1/2)	Lepus americanus tahoensis (Sierra Nevada snowshoe hare)	xC2			YES		1950
	G3T3	S1N		(1/4)	Strix occidentalis occidentalis (California Spotted Owl)	xC2	C	S, I, L	YES		1993

#### CLOVER VALLEY MACROSITE

Site: <b>BRADISH SPRING/WILLOMONTE RANCH</b> Ranks: B1 P1 M1 Code: S. USNVHP*524 Owners known: p possible: Elev.: 5780-5800 ft. Max. distance: 1.1 mi. Co(s): Elko	G5T1	S1	=	(2/3)	Rhinichthys osculus oligoporus (Clover Valley speckled dace)	LE	S		YES	Y	2006
Site: <b>WARM CREEK RANCH</b> Ranks: B1 P1 M1 Code: S. USNVHP*42 Owners known: pb possible: Elev.: 5800-5800 ft. Max. distance: 0.0 mi. Co(s): Elko	G5T1	S1	=	(1/3)	Rhinichthys osculus oligoporus (Clover Valley speckled dace)	LE	S		YES	Y	2006

#### DELANO MOUNTAINS MACROSITE

Site: <b>CRITTENDEN SPRINGS</b> Ranks: B1 P1 M1 Code: S. USNVHP*77 Owners known: p possible: n Elev.: 5240-5280 ft. Max. distance: 1.1 mi. Co(s): Elko	G1	S1		(2/2)	Pyrgulopsis lentigians (Crittenden springsnail)					Y	1998
--------------------------------------------------------------------------------------------------------------------------------------------------------------------	----	----	--	-------	----------------------------------------------------	--	--	--	--	---	------

Site information	Grank	Srank	Trnd	Site/Total	Scientific and common names	Usfws	Blm	Usfs	State	Ndm	Year
------------------	-------	-------	------	------------	-----------------------------	-------	-----	------	-------	-----	------

## FISH CREEK VALLEY MACROSITE

Site: <b>FISH CREEK SPRINGS</b>	G2Q	S2		(1/29)	Asclepias eastwoodiana (Eastwood milkweed)	xC2	N	S		Y	2001
Ranks: B1 P1 M1 Code: S.USNVHP*460											
Owners known: bp possible:	G3T3	S2?		(1/3)	Astragalus jejunus var. jejunus (starveling milkvetch)						2001
Elev.: 6020-6550 ft. Max. distance: 12.7 mi.											
Co(s): Eureka, White Pine	G4T1Q	S1		(1/1)	Gila bicolor euchila (Fish Creek Springs tui chub)	xC2	N		YES	Y	1985
	G3	S1		(1/1)	Parthenium ligulatum (low feverfew)		N				2001

## FISH LAKE VALLEY MACROSITE

Site: <b>MCNETT RANCH</b>	G5	S3B	\=	(1/36)	Antrozous pallidus (pallid bat)		N, C	I			1994
Ranks: B1 P1 M1 Code: S.USNVHP*461											
Owners known: p possible:	G4T1Q	S1		(1/1)	Gila bicolor ssp. (unnamed) (Fish Lake Valley tui chub)	xC2	N		YES	Y	2005
Elev.: 4795-4880 ft. Max. distance: 4.5 mi.											
Co(s): Esmeralda											

## HAMLIN VALLEY MACROSITE

Site: <b>BIG SPRINGS</b>	G1	S1		(1/1)	Pyrgulopsis anguina (longitudinal gland springsnail)						1992
Ranks: B1 P1 M1 Code: S.USNVHP*590											
Owners known: p possible:	G2	S1		(1/2)	Pyrgulopsis peculiariis (bifid duct pyrg)		N				1998
Elev.: 5560-5560 ft. Max. distance: 1.5 mi.											
Co(s): White Pine											

## HIGH ROCK/HAYS CANYON RANGE MACROSITE

Site: <b>BUTTE SPRING HILLS</b>	G2G3	S2S3		(4/15)	Pyrgulopsis longiglans (western Lahontan springsnail)					Y	1998
Ranks: B2 P1 M1 Code: S.USNVHP*603											
Owners known: pb possible:											
Elev.: 5300-5400 ft. Max. distance: .9 mi.											
Co(s): Humboldt											
Site: <b>HOG RANCH MOUNTAIN</b>	G3?	S3?		(1/29)	Astragalus porrectus (Lahontan milkvetch)					Y	1982
Ranks: B1 P2 M2 Code: S.USWR01*255											
Owners known: spb possible:	G4T2?	S1		(1/1)	Astragalus pulsi feræ var. coronensis (Rams Horn Spring milkvetch)	xC2	C	C			1983
Elev.: 4600-7000 ft. Max. distance: 14.5 mi.											
Co(s): Washoe	G3	S3		(28/93)	Astragalus tiehmi (Tiehm milkvetch)	xC2	N, C			Y	1992

Site information	Grank	Srank	Trnd	Site/Total	Scientific and common names	Usfws	Blm	Usfs	State	Ndm	Year
HOG RANCH MOUNTAIN (cont.)	G3Q	S3		(24/79)	Cryptantha schoolcraftii (Schoolcraft catseye)	xC2	N, C			P	1992
	G3	S3	\=	(32/58)	Eriogonum crosbyae (Crosby buckwheat)	RA	N, C				1991
Site: LOST CREEK RANCH Ranks: B2 P1 M1 Code: S.USWR01*1577 Owners known: sp possible: Elev.: 4980-5500 ft. Max. distance: 6.4 mi. Co(s): Washoe	G1	S1		(1/5)	Catostomus sp. (unnamed) (Wall Canyon sucker)	xC2	N			Y	1990
	G3Q	S3		(7/79)	Cryptantha schoolcraftii (Schoolcraft catseye)	xC2	N, C			P	1998
Site: TABLE LAKES Ranks: B1 P2 M2 Code: S.USNVHP*718 Owners known: sp possible: Elev.: 5680-6280 ft. Max. distance: 5.6 mi. Co(s): Washoe	G2	S2?		(4/14)	Phacelia inundata (playa phacelia)		N, C	C			2001
Site: WALL CANYON Ranks: B1 P1 M1 Code: S.USWR01*333 Owners known: sp possible: Elev.: 5100-5700 ft. Max. distance: 14.0 mi. Co(s): Washoe	G1	S1		(4/5)	Catostomus sp. (unnamed) (Wall Canyon sucker)	xC2	N			Y	2002
	G3Q	S3		(2/79)	Cryptantha schoolcraftii (Schoolcraft catseye)	xC2	N, C			P	1991
Site: YELLOW ROCK CANYON Ranks: B1 P2 M2 Code: S.USWR01*1440 Owners known: s possible: Elev.: 5080-5600 ft. Max. distance: 5.3 mi. Co(s): Washoe	G3	S3	\=	(1/58)	Eriogonum crosbyae (Crosby buckwheat)	RA	N, C				1985
	G2T2	S2		(3/12)	Ivesia rhypara var. rhypara (grimy mousetails)	RI	N, C				1994

#### HOT CREEK VALLEY/PALISADE MACROSITE

Site: HOT CREEK Ranks: B1 P1 M1 Code: S.USNVHP*27 Owners known: bp possible: Elev.: 5050-5200 ft. Max. distance: 5.9 mi. Co(s): Nye	G4T1Q	S1		(1/7)	Gila bicolor ssp. (unnamed) (Railroad Valley tui chub)	xC2	N		YES	Y	2004
	G4T1Q	S1		(2/2)	Gila bicolor ssp. (unnamed) (Hot Creek Valley tui chub)	xC2	N		YES	Y	1983
	G1G2Q	S1		(2/4)	Sclerocactus blainei (Blaine pincushion)	xC2	N		CY	P	1980
Site: WARM SPRINGS Ranks: B1 P2 M2 Code: S.USNVHP*44 Owners known: b possible: Elev.: 5300-5760 ft. Max. distance: 12.7 mi. Co(s): Nye	G3G4T2?Q	S2?		(1/15)	Cymopterus ripleyi var. ripleyi (Ripley biscuitroot)					Y	1942
	G1Q	S1		(1/2)	Sclerocactus nyensis (Tonopah pincushion)		N		CY	Y	1983



Site information	Grank	Srank	Trnd	Site/Total	Scientific and common names	Usfws	Blm	Usfs	State	Ndm	Year
INDEPENDENCE VALLEY MACROSITE											
Site: <b>WARM SPRINGS RANCH (ELKO CO)</b>	G4T1Q	S1		(1/1)	Gila bicolor isolata	xC2	N		YES	Y	1999
Ranks: B1 P1 M1 Code: S.USNVHP*261					(Independence Valley tui chub)						
Owners known: pb possible:	G5T1	S1	=	(1/1)	Rhinichthys osculus lethoporus	LE	S		YES	Y	1999
Elev.: 5615-5615 ft. Max. distance: 0.0 mi.					(Independence Valley speckled dace)						
Co(s): Elko											
KNOLL MOUNTAIN MACROSITE											
Site: <b>EAGLE FLAT</b>	G1G2	S1S2		(3/9)	Arabis falci fructa	xC2	N			Y	1992
Ranks: B1 P1 M1 Code: S.USNVHP*241					(Elko rockcress)						
Owners known: b possible: n											
Elev.: 5700-6100 ft. Max. distance: 3.2 mi.											
Co(s): Elko											
Site: <b>EAGLE FLAT SOUTH</b>	G1G2	S1S2		(2/9)	Arabis falci fructa	xC2	N			Y	1992
Ranks: B2 P1 M1 Code: S.USNVHP*455					(Elko rockcress)						
Owners known: b possible: n											
Elev.: 5900-5970 ft. Max. distance: 2.7 mi.											
Co(s): Elko											
KOBEN VALLEY MACROSITE											
Site: <b>HOT SPRING HILL</b>	G5T2Q	S2		(1/9)	Astragalus calycosus var. monophyllidius						1981
Ranks: B1 P1 M1 Code: S.USWR01*14					(one-leaflet Torrey milkvetch)						
Owners known: bn possible:	G4	S3	\\	(1/112)	Brachylagus idahoensis	xC2	N		YES		1994
Elev.: 6060-6130 ft. Max. distance: 6.3 mi.					(pygmy rabbit)						
Co(s): Eureka	G1Q	S1		(1/2)	Castilleja sal sugi nosa	XC1	S		CE	Y	2002
					(Monte Neva paintbrush)						
LAKE MEAD MACROSITE											
Site: <b>BITTER SPRING VALLEY</b>	G2	S2		(6/25)	Andrena balsamorhizae		N				1998
Ranks: B1 P2 M2 Code: S.USWR01*536					(Mojave Gypsum Bee)						
Owners known: bkp possible: n	G3	S3	\\	(10/95)	Arctomecon californica	xC2	S		CE		1994
Elev.: 1467-2461 ft. Max. distance: 8.5 mi.					(Las Vegas bearpoppy)						
Co(s): Clark	G4T2T3	S1S2		(1/7)	Astragalus preussii var. laxiflorus						1979
					(Littlefield milkvetch)						
	G2G3	S1	=	(1/12)	Didymodon nevadensis		N				1998
					(Gold Butte moss)						
	G5T2T3?Q	S1S2		(1/29)	Eriogonum corymbosum var. (unnamed)		N		CE#		1999
					(Las Vegas buckwheat)						

Site information	Grank	Srank	Trnd	Site/Total	Scientific and common names	Usfws	Blm	Usfs	State	Ndm	Year
BITTER SPRING VALLEY (cont.)	G2	S2		(2/39)	Megandrena mentzeliae (Red-tailed Blazing Star Bee)					Y	1998
	G2	S2		(2/17)	Perdita meconis (Mojave poppy bee)		N				1998
Site: <b>BLACK CANYON SPRINGS</b> Ranks: B1 P1 M1 Code: S. USNVHP*1715 Owners known: k possible: Elev.: 675-920 ft. Max. distance: 3.2 mi. Co(s): Clark	G1	S1	\\	(3/6)	Rana onca (relict leopard frog)	C			YES		2000
Site: <b>BLUE POINT, RODGERS, AND SURROUNDING SPRINGS</b> Ranks: B1 P1 M1 Code: S. USNVHP*666 Owners known: k possible: nb Elev.: 1427-2630 ft. Max. distance: 5.0 mi. Co(s): Clark	G2	S2		(2/25)	Andrena balsamorhizae (Mojave Gypsum Bee)		N				1998
	G3	S3	\\	(1/95)	Arctomecon californica (Las Vegas bearpoppy)	xC2	S		CE		1987
	G2	S1		(2/6)	Cirsium virginense (Virgin River thistle)	xC2					1982
	G2	S2		(1/8)	Crossidium seriatum (rough fringemoss)						1998
	G2G3	S1	=	(1/12)	Didymodon nevadensis (Gold Butte moss)		N				1998
	G2G3	S1?		(2/4)	Enceliopsis argophylla (silverleaf sunray)		N				2003
	G2	S2		(1/39)	Megandrena mentzeliae (Red-tailed Blazing Star Bee)					Y	1998
	G2	S2		(1/17)	Perdita meconis (Mojave poppy bee)		N				1998
	G3Q	S3		(1/84)	Perityle intricata (desert rockdaisy)					P	1977
	GH	SH	\	(1/1)	Pyrgulopsis coloradensis (Blue Point springsnail)					Y	1993/ 2001
	G1	S1	\\	(3/6)	Rana onca (relict leopard frog)	C			YES		2004
Site: <b>GALE HILLS</b> Ranks: B1 P2 M2 Code: S. USNVHP*166 Owners known: kbp possible: n Elev.: 1240-2490 ft. Max. distance: 12.0 mi. Co(s): Clark	G2	S2		(3/25)	Andrena balsamorhizae (Mojave Gypsum Bee)		N				1998
	G3	S3	\\	(9/95)	Arctomecon californica (Las Vegas bearpoppy)	xC2	S		CE		1996
	G4?T2T3	S2S3		(2/45)	Astragalus geyeri var. triquetrus (threecorner milkvetch)	xC2	S		CE		1995
	G4T2T3	S1S2		(2/7)	Astragalus preussii var. laxiflorus (Littlefield milkvetch)						1995

Site information	Grank	Srank	Trnd	Site/Total	Scientific and common names	Usfws	Blm	Usfs	State	Ndm	Year
GALE HILLS (cont.)	G2	S2		(2/8)	Crossidium seriatum (rough fringemoss)						1998
	G2G3	S1	=	(2/12)	Didymodon nevadensis (Gold Butte moss)		N				1998
	G2	S2		(4/39)	Megandrena mentzeliae (Red-tailed Blazing Star Bee)					Y	1998
	G2	S2		(3/17)	Perdita meconis (Mojave poppy bee)		N				1998
Site: HOOVER DAM REFUGIA Ranks: B1 P2 M2 Code: S.USNVHP*440 Owners known: k possible: Elev.: 722-1510 ft. Max. distance: .4 mi. Co(s): Clark	G1	S1	\	(1/3)	Cyprinodon diabolis (Devil's Hole pupfish)	LE	S		YES	Y	2001
	G4T4	S2	=	(1/76)	Heloderma suspectum cinctum (banded Gila monster)	xC2NL	N, C		YES		1977
Site: LAKE MEAD (AQUATIC) Ranks: B1 P1 M2 Code: S.USWR01*207 Owners known: n possible: k Elev.: 1180-1180 ft. Max. distance: 0.0 mi. Co(s): Clark	G1	S1	\	(1/10)	Xyrauchen texanus (razorback sucker)	LE	S	E	YES		1990
Site: OVERTON ARM Ranks: B1 P1 M2 Code: S.USNVHP*439 Owners known: knpb possible: r Elev.: 1200-1970 ft. Max. distance: 25.2 mi. Co(s): Clark	G2	S2		(3/25)	Andrena balsamorhizae (Mojave Gypsum Bee)		N				1998
	G3	S3	\	(2/95)	Arctomecon californica (Las Vegas bearpoppy)	xC2	S		CE		1994
	G4?T2T3	S2S3		(4/45)	Astragalus geyeri var. triquetrus (threecorner milkvetch)	xC2	S		CE		1995
	G4T2T3	S1S2		(1/7)	Astragalus preussii var. laxiflorus (Littlefield milkvetch)						1980
	G2	S2		(3/8)	Crossidium seriatum (rough fringemoss)						1998
	G2G3	S1	=	(3/12)	Didymodon nevadensis (Gold Butte moss)		N				1998
	G2	S2		(7/37)	Eriogonum viscidulum (sticky buckwheat)	xC2	S		CE		1995
	G2	S2		(2/39)	Megandrena mentzeliae (Red-tailed Blazing Star Bee)					Y	1998
	G3	S3		(1/14)	Pediomelum castoreum (Beaver Dam breadroot)	xC2					1976
	G2	S2		(6/17)	Perdita meconis (Mojave poppy bee)		N				1998

Site information	Grank	Srank	Trnd	Site/Total	Scientific and common names	Usfws	Blm	Usfs	State	Ndm	Year
<b>LAKE TAHOE BASIN MACROSITE</b>											
Site: <b>LAKE TAHOE (AQUATICS)</b> Ranks: B1 P1 M1 Code: S. USNVHP*214 Owners known: n possible: t Elev.: 6000-6000 ft. Max. distance: 0.0 mi. Co(s): Douglas	G1	S1	\	(1/1)	Capnia lacustra (Tahoe benthic stonefly)	xC2					1962
Site: <b>LAKE TAHOE (BEACH)</b> Ranks: B1 P1 M2 Code: S. USNVHP*219 Owners known: ptn possible: Elev.: 6224-6230 ft. Max. distance: 19.2 mi. Co(s): Douglas, Washoe, Carson City	G1	S1	\	(19/13)	Rorippa subumbellata (Tahoe yellowcress)	C	S	S, L	CE		2003
<b>LAKE VALLEY MACROSITE</b>											
Site: <b>GOUGE EYE WELL</b> Ranks: B2 P2 M1 Code: S. USNVHP*70 Owners known: bp possible: Elev.: 5915-5922 ft. Max. distance: 3.4 mi. Co(s): Lincoln	G2G3	S2S3	\	(2/16)	Phacelia parishii (Parish phacelia)	xC2	N, C				1995
Site: <b>LAKE VALLEY SPRINGS</b> Ranks: B1 P1 M1 Code: S. USNVHP*555 Owners known: p possible: Elev.: 5080-5960 ft. Max. distance: 2.9 mi. Co(s): Lincoln	G5T2	S2	\=	(1/11)	Cercyonis pegala pluviialis (White River wood nymph)	xC2	N				1992
	G5T3	S3	\=	(1/21)	Polites sabuleti nigrescens (dark sandhill skipper)						Y 1984
	G1	S1		(1/1)	Pyrgulopsis sublata (Lake Valley springsnail)						Y 1992
Site: <b>SIXMILE WELL</b> Ranks: B1 P2 M2 Code: S. USNVHP*706 Owners known: bp possible: Elev.: 5500-5800 ft. Max. distance: 6.6 mi. Co(s): Lincoln	G3	S3		(3/40)	Cryptantha welshii (White River catseye)	xC2	N				Y 1994
	G5T3T4	S3		(1/31)	Machaeranthera grindelioides var. depressa (rayless tansy aster)						1981
	G1G2	S1S2		(3/5)	Mentzelia argillicola (Piöche blazingstar)		N				Y 2001
<b>LAMOILLE/PLEASANT VALLEY MACROSITE</b>											
Site: <b>RABBIT CREEK</b> Ranks: B1 P1 M1 Code: S. USNVHP*586 Owners known: p possible: n Elev.: 5600-5700 ft. Max. distance: .8 mi. Co(s): Elko	G1	S1		(1/2)	Pyrgulopsis leporina (Elko springsnail)						Y 1991
	G4T?0	S2S3	\=	(1/126)	Rana luteiventris pop (Columbia spotted frog (Great Basin pop	C	S	S			1953



Site information	Grank	Srank	Trnd	Site/Total	Scientific and common names	Usfws	Blm	Usfs	State	Ndm	Year
LAS VEGAS MACROSITE											
Site: <b>APEX</b> Ranks: B1 P1 M1 Code: S.USWR01*772 Owners known: bd possible: np Elev.: 1930-2520 ft. Max. distance: 7.1 mi. Co(s): Clark	G2	S2		(1/25)	Andrena balsamorhizae (Mojave Gypsum Bee)		N				1998
	G3	S3	\\	(10/95)	Arctomecon californica (Las Vegas bearpoppy)	xC2	S		CE		1999
	G4T4	S2	=	(1/76)	Heloderma suspectum cinctum (banded Gila monster)	xC2NL	N, C		YES		1992
	G3T3Q	S3		(1/52)	Penstemon bicolor ssp. roseus (rosy twotone beardtongue)	xC2	N	S			1992
Site: <b>CORN CREEK SPRINGS</b> Ranks: B1 P1 M1 Code: S.USWR01*365 Owners known: wp possible: db Elev.: 2918-3880 ft. Max. distance: 6.2 mi. Co(s): Clark	G5	S3B	\=	(1/36)	Antrozous pallidus (pallid bat)		N, C	I			1962
	G5T3	S1B		(1/23)	Coccyzus americanus occidentalis (Western Yellow-billed Cuckoo)	C	S	I	YES		2004
	G4	S3B	\	(1/87)	Corynorhinus townsendii (Townsend's big-eared bat)		N, C	S, I, L			1962
	G1T1	S1	\\	(1/3)	Empetrichthys latos latos (Pahrump pool fish)	LEPT	S		YES	Y	2003
	G5T1T2	S1B		(1/17)	Empidonax traillii extimus (Southwestern Willow Flycatcher)	LE	S	E	YES		2005
	G5	S3		(1/24)	Lasiorycteris noctivagans (silver-haired bat)		N				1964
	G5	S3?	=	(1/13)	Lasiurus cinereus (hoary bat)		N				1965
	G2	S2		(1/39)	Megandrena mentzeliae (Red-tailed Blazing Star Bee)					Y	1998
	G5	S3B		(1/75)	Myotis ciliolabrum (western small-footed myotis)	xC2	N, C				1963
	G1	S1		(2/2)	Pyrgulopsis fausta (Corn Creek springsnail)					Y	2000
	G5	S4B	=	(1/23)	Tadarida brasiliensis (Brazilian free-tailed bat)		N				1965
Site: <b>NELLIS AFB</b> Ranks: B1 P2 M1 Code: S.USNVHP*1737 Owners known: pdn possible: b Elev.: 1808-1980 ft. Max. distance: 2.1 mi. Co(s): Clark	G3	S3	\\	(2/95)	Arctomecon californica (Las Vegas bearpoppy)	xC2	S		CE		1998
	G5T2T3?Q	S1S2		(5/29)	Eriogonum corymbosum var. (unnamed) (Las Vegas buckwheat)		N		CE#		1999

Site information	Grank	Srank	Trnd	Site/Total	Scientific and common names	Usfws	Blm	Usfs	State	Ndm	Year
Site: <b>NORTH LAS VEGAS</b>	G3	S3	\	(12/95)	Arctomecon californica (Las Vegas bearpoppy)	xC2	S		CE		2002
Ranks: B1 P1 M1 Code: S. USNVHP*1736											
Owners known: pb possible:	G3	S3	\	(1/130)	Arctomecon merriamii (white bearpoppy)	xC2	N	S			1995
Elev.: 1992-2330 ft. Max. distance: 7.4 mi.											
Co(s): Clark	G5T2T3?Q	S1S2		(17/29)	Eriogonum corymbosum var. (unnamed) (Las Vegas buckwheat)		N		CE#		1998
	G2G3	S2S3	\	(1/16)	Phacelia parishii (Parish phacelia)	xC2	N, C				1979/ 1995

#### MEADOW VALLEY WASH MACROSITE

Site: <b>BENNETT SPRINGS WASH</b>	G1Q	S1		(10/13)	Sclerocactus schlesseri (Schlesseri pincushion)	xC2	N		CY	P	1993
Ranks: B1 P2 M2 Code: S. USNVHP*225											
Owners known: bp possible:											
Elev.: 4760-5145 ft. Max. distance: 3.8 mi.											
Co(s): Lincoln											
Site: <b>CONDOR CANYON</b>	G3	S3		(1/38)	Arabis shockleyi (Shockley rockcress)			C, I			1977
Ranks: B1 P1 M1 Code: S. USNVHP*265											
Owners known: bp possible:	G3G4T2	S2		(2/11)	Catostomus clarkii ssp. (unnamed) (Meadow Valley Wash desert sucker)	xC2	N		YES	Y	2001
Elev.: 4840-5110 ft. Max. distance: 1.5 mi.											
Co(s): Lincoln	G1T1	S1		(2/2)	Lepidomeda mollispinis pratensis (Big Spring spinedace)	LT	S		YES	Y	2001
	G5T2	S2	=	(2/11)	Rhinichthys osculus ssp. (unnamed) (Meadow Valley speckled dace)		N			Y	2001
Site: <b>ECHO CANYON RESERVOIR SRA</b>	G3G4	S2	\	(1/13)	Bufo microscaphus (Arizona toad)		N				1951
Ranks: B1 P2 M2 Code: S. USNVHP*266											
Owners known: pn possible: b	G3G4T2	S2		(1/11)	Catostomus clarkii ssp. (unnamed) (Meadow Valley Wash desert sucker)	xC2	N		YES	Y	1984
Elev.: 5261-5500 ft. Max. distance: 4.5 mi.											
Co(s): Lincoln	G1G2	S1S2		(1/5)	Mentzelia argillicola (Piöche blazingstar)		N			Y	1935
Site: <b>PANACA</b>	G1G2	S1S2		(1/5)	Mentzelia argillicola (Piöche blazingstar)		N			Y	2001
Ranks: B2 P1 M1 Code: S. USNVHP*224											
Owners known: pb possible:	G1Q	S1		(1/13)	Sclerocactus schlesseri (Schlesseri pincushion)	xC2	N		CY	P	1992
Elev.: 4750-4900 ft. Max. distance: 1.7 mi.											
Co(s): Lincoln	G2	SH		(1/1)	Spiranthes diluvialis (Ute lady's tresses)	LT	S	T	CE		1936/ 1997

Site information

MOAPA VALLEY MACROSITE

Grank Srnk Trnd Site/Total Scientific and common names Usfws Blm Usfs State Ndm Year

Site: **MOAPA NWR/WARM SPRINGS**

Ranks: B1 P1 M1 Code: S.USWR01\*1659

Owners known: pwn possible: b

Elev.: 1172-1830 ft. Max. distance: 2.8 mi.

Co(s): Clark

G5	S3B	\=	(3/36)	Antrozous pallidus (pallid bat)		N, C	I			2001
G5T3	S1B		(1/23)	Coccyzus americanus occidentalis (Western Yellow-billed Cuckoo)	C	S	I	YES		2005
G4	S3B	\	(4/87)	Corynorhinus townsendii (Townsend's big-eared bat)		N, C	S, I, L			2001
G2T2	S2		(5/7)	Crenichthys baileyi moapae (Moapa White River springfish)	xC2			YES	Y	2005
G5T1T2	S1B		(1/17)	Empidonax traillii extimus (Southwestern Willow Flycatcher)	LE	S	E	YES		2005
G4	S1S2		(1/18)	Euderma maculatum (spotted bat)	xC2	S	S	YES		2000
G1T1Q	S1		(3/9)	Gila seminuda pop (Virgin River chub (Muddy River pop.))	LE	N		YES	Y	2004
G5	S3		(1/24)	Lasiorycteris noctivagans (silver-haired bat)		N				1969
G2	S1	\	(2/2)	Lasiurus blossevillii (western red bat)		N	I			2001
G5	S3?	=	(1/13)	Lasiurus cinereus (hoary bat)		N				2000
G5	S1		(5/5)	Lasiurus xanthinus (western yellow bat)						2002
G1	S1		(1/1)	Limnecoris moapensis (Warm Springs naucorid)					Y	1997
G4	S2		(3/10)	Macrotus californicus (California leaf-nosed bat)	xC2	N, C	C			2001
G1	S1	\	(6/5)	Moapa coriacea (Moapa dace)	LE	S		YES	Y	2003
G5	S3B		(3/20)	Myotis californicus (California myotis)		N				2001
G4G5	S2B		(2/17)	Myotis thysanodes (fringed myotis)	xC2	N, C				2000
G1G3T1	S1		(3/4)	Pelocoris shoshone shoshone (Pahranagat naucorid bug)		N			Y	1994
G1G2	S1S2		(7/7)	Pyrgulopsis avernalis (Moapa pebblesnail)	xC2				Y	1998
G1	S1		(5/5)	Pyrgulopsis carinifera (Moapa Valley springsnail)					Y	1998
G5T1	S1		(1/3)	Rhinichthys osculus moapae (Moapa speckled dace)	xC2	N		YES	Y	2004
G1	S1		(1/1)	Stenelmis moapa (Moapa Warm Spring riffle beetle)	xC2	N			Y	1948

Site information	Grank	Srank	Trnd	Site/Total	Scientific and common names	Usfws	Blm	Usfs	State	Ndm	Year
MOAPA NWR/WARM SPRINGS (cont.)	G4	S1S2		(1/3)	Stenelmis occidentalis (neararctic riffle beetle)						1986
	G5	S4B	=	(1/23)	Tadarida brasiliensis (Brazilian free-tailed bat)		N				2001
	G2	S2	\	(8/11)	Tryonia clathrata (grated tryonia)	xC2	N			Y	1997
Site: <b>MUDDY RIVER COORIDOR &amp; UPLANDS</b>	G1?	S1		(1/1)	Aegialia knighti (aegialian scarab beetle)		N			Y	1996
Ranks: B1 P1 M1 Code: S. USNVHP*45	G5	S3B	\=	(1/36)	Antrozous pallidus (pallid bat)		N, C	I			2000
Owners known: bnpkri possible:	G4?T2T3	S2S3		(13/45)	Astragalus geyeri var. triquetrus (threecorner milkvetch)	xC2	S		CE		1995
Elev.: 1000-2400 ft. Max. distance: 20.0 mi.	G3	S3	\	(2/24)	Astragalus nyensis (Nye milkvetch)						1987
Co(s): Clark	G4T2T3	S1S2		(1/7)	Astragalus preussii var. laxiflorus (Littlefield milkvetch)						1995
	G3G4	S2	\	(1/13)	Bufo microscaphus (Arizona toad)		N				1951
	G2	S1		(1/6)	Cirsium virginense (Virgin River thistle)	xC2					1995
	G5T3	S1B		(1/23)	Coccyzus americanus occidentalis (Western Yellow-billed Cuckoo)	C	S	I	YES		1971
	G4	S3B	\	(1/87)	Corynorhinus townsendii (Townsend's big-eared bat)		N, C	S, I, L			2000
	G2T2	S2		(2/7)	Crenichthys baileyi moapae (Moapa White River springfish)	xC2			YES	Y	2002
	G2	S2		(6/37)	Eriogonum viscidulum (sticky buckwheat)	xC2	S		CE		1995
	G1T1Q	S1		(6/9)	Gila seminuda pop (Virgin River chub (Muddy River pop.))	LE	N		YES	Y	2004
	G2G3Q	S2		(2/21)	Helianthus deserticola (dune sunflower)						1983
	G4T4	S2	=	(3/76)	Heloderma suspectum cinctum (banded Gila monster)	xC2NL	N, C		YES		1992
	G2G3	S1		(2/2)	Hesperopsis gracieae (MacNeill sooty wing)	xC2	N				1988
	G5T2T3	S2N		(1/4)	Ixobrychus exilis hesperis (Western Least Bittern)	xC2	N		YES		1987
	G5	S3		(1/24)	Lasiorycteris noctivagans (silver-haired bat)		N				1964
	G2	S2		(6/39)	Megandrena mentzeliae (Red-tailed Blazing Star Bee)					Y	1998
	G3	S3		(2/14)	Pedionelum castoreum (Beaver Dam breadroot)	xC2					1991

Site information	Grank	Srank	Trnd	Site/Total	Scientific and common names	Usfws	Blm	Usfs	State	Ndm	Year
MUDDY RIVER COORIDOR AND UPLANDS (cont.)	G3T3Q	S3		(1/52)	Penstemon bicolor ssp. roseus (rosy twotone beardtongue)	xC2	N	S			1972
	G5	S2B		(3/4)	Phainopepla nitens (Phainopepla)		N		YES		2003
	G1	S1		(1/2)	Plagopterus argentiissimus (woundfin)	LEXN	S		YES		1963
	G5T?	S1		(2/7)	Rallus longirostris yumanensis (Yuma Clapper Rail)	LE			YES		2000
	G5T1	S1		(2/3)	Rhinichthys osculus moapae (Moapa speckled dace)	xC2	N		YES	Y	1978
	G4	S1S2		(1/3)	Stenelmis occidentalis (neararctic riffle beetle)						1986
	G5	S4B	=	(2/23)	Tadarida brasiliensis (Brazilian free-tailed bat)		N				2000

#### MONTANA MTNS/DOUBLE H MTNS MACROSITE

Site: <b>THACKER PASS</b>	G1	S1		(2/2)	Pyrgulopsis imperialis (Kings River springsnail)					Y	2001
Ranks: B1 P1 M1											
Code: S. USNVHP*571											
Owners known: p											
possible: n											
Elev.: 4440-4560 ft.											
Max. distance: .2 mi.											
Co(s): Humboldt											

#### PAH RAH RANGE MACROSITE

Site: <b>WARM SPRINGS VALLEY (WASHOE CO)</b>	G3G4T1	S1	\	(2/3)	Pseudocypaeodes eunus obscurus (Carson wandering skipper)	LE					1998
Ranks: B1 P1 M1											
Code: S. USNVHP*641											
Owners known: bp											
possible:											
Elev.: 4248-4265 ft.											
Max. distance: 1.4 mi.											
Co(s): Washoe											

#### PAHRANAGAT VALLEY MACROSITE

Site: <b>ASH SPRINGS/PAHRANAGAT RIVER</b>	G5T3	S1B		(2/23)	Coccyzus americanus occidentalis (Western Yellow-billed Cuckoo)	C	S	I	YES		2002
Ranks: B1 P1 M1											
Code: S. USWR01*407											
Owners known: pb											
possible: w											
Elev.: 3480-3800 ft.											
Max. distance: 4.9 mi.											
Co(s): Lincoln											
	G2T1	S1	=	(2/2)	Crenichthys baileyi baileyi (White River springfish)	LE	S		YES	Y	2003
	G5T1T2	S1B		(1/17)	Empidonax traillii extimus (Southwestern Willow Flycatcher)	LE	S	E	YES		2001
	G2G3T1Q	S1		(2/2)	Gila robusta jordani (Pahranagat roundtail chub)	LE	S		YES	Y	2001
	G4T4	S2	=	(1/76)	Heloderma suspectum cinctum (banded Gila monster)	xC2NL	N, C		YES		1995

Site information	Grank	Srank	Trnd	Site/Total	Scientific and common names	Usfws	Blm	Usfs	State	Ndm	Year
ASH SPRINGS/PAHRANAGAT RIVER (cont.)	G5T2	S2		(1/6)	Microtus montanus fucosus (Pahranagat Valley montane vole)	xC2	N			Y	1981
	G1G3T1	S1		(1/4)	Pelocoris shoshone shoshone (Pahranagat naucorid bug)		N			Y	1949
	G1	S1		(1/6)	Pyrgulopsis merriami (Pahranagat pebblesnail)	xC2				Y	1994
	G5T1Q	S1		(5/5)	Rhinichthys osculus velifer (Pahranagat speckled dace)	xC2	N		YES	Y	2002
	G2?Q	S1S2		(1/5)	Sisyrinchium radicum (St. George blue-eyed grass)						1977
	G1	S1		(1/1)	Stenelmis laryersi (Ash Springs Riffle Beetle)					Y	1992
	G4	S1S2		(1/3)	Stenelmis occidentalis (neararctic riffle beetle)						1986
	G2	S2	\	(1/11)	Tryonia clathrata (grated tryonia)	xC2	N			Y	1992
Site: <b>CRYSTAL SPRINGS (LINCOLN CO)</b> Ranks: B1 P1 M1 Code: S. USWR01*820 Owners known: p possible: nb Elev.: 3820-4000 ft. Max. distance: .3 mi. Co(s): Lincoln	G5T3	S1B		(1/23)	Coccyzus americanus occidentalis (Western Yellow-billed Cuckoo)	C	S	I	YES		2001
	G2T1	S1	=	(1/3)	Crenichthys baileyi grandis (Hiko White River springfish)	LE	S		YES	Y	2006
	G5T1T2	S1B		(1/17)	Empidonax traillii extimus (Southwestern Willow Flycatcher)	LE	S	E	YES		2002
	G5T2	S2		(1/6)	Microtus montanus fucosus (Pahranagat Valley montane vole)	xC2	N			Y	1946
	G1	S1		(1/2)	Pyrgulopsis hubbsi (Hubbs pyrg)					Y	1998
	G1	S1		(1/6)	Pyrgulopsis merriami (Pahranagat pebblesnail)	xC2				Y	1973
Site: <b>HIKO</b> Ranks: B1 P1 M1 Code: S. USWR01*191 Owners known: pn possible: b Elev.: 3830-4000 ft. Max. distance: 2.5 mi. Co(s): Lincoln	G2T1	S1	=	(1/3)	Crenichthys baileyi grandis (Hiko White River springfish)	LE	S		YES	Y	2005
	G5T1T2	S1B		(1/17)	Empidonax traillii extimus (Southwestern Willow Flycatcher)	LE	S	E	YES		2005
	G5T2	S2		(1/6)	Microtus montanus fucosus (Pahranagat Valley montane vole)	xC2	N			Y	1946
	G5	S2B		(1/4)	Phainopepla nitens (Phainopepla)		N		YES		1965
	G1	S1		(1/2)	Pyrgulopsis hubbsi (Hubbs pyrg)					Y	1986/ 1992
	G1	S1		(1/6)	Pyrgulopsis merriami (Pahranagat pebblesnail)	xC2				Y	1973

Site information	Grank	Srank	Trnd	Site/Total	Scientific and common names	Usfws	Blm	Usfs	State	Ndm	Year
Site: <b>PAHRANAGAT NWR</b>	G5T1T2	S1B		(1/17)	Empidonax traillii extimus	LE	S	E	YES		2004
Ranks: B1 P1 M1 Code: S. USNVHP*262					(Southwestern Willow Flycatcher)						
Owners known: wb possible:	G4	S2S3	\	(1/438)	Gopherus agassizii	LTNL	S	T	YES		1987
Elev.: 3160-3400 ft. Max. distance: 9.8 mi.					(desert tortoise (Mojave Desert pop.))						
Co(s): Lincoln	G4T4	S2	=	(1/76)	Heloderma suspectum cinctum	xC2NL	N, C		YES		1979
					(banded Gila monster)						
	G5T2	S2		(3/6)	Microtus montanus fuscus	xC2	N			Y	1993
					(Pahrnagat Valley montane vole)						

#### PAHRUMP VALLEY MACROSITE

Site: <b>PAHRUMP</b>	G3T2T3	S2S3		(3/42)	Astragalus mohavensis var. hemigyris	xC2	S, C	S	CE	Y	1999
Ranks: B1 P1 M1 Code: S. USNVHP*329					(halfring milkvetch)						
Owners known: bp possible:	G5T1T2	S1	\	(1/1)	Atriplex argentea var. longitrichoma						1995
Elev.: 2490-4094 ft. Max. distance: 14.9 mi.					(Pahrump silverscale)						
Co(s): Nye, Clark, CA	G2	S2		(25/47)	Eriogonum bifurcatum	xC2	N, C				1998
					(Pahrump Valley buckwheat)						
	G2	S2		(1/17)	Eriogonum concinnum					Y	1970
					(Darin buckwheat)						
	G2?	S1		(1/4)	Eriogonum contiguum						1971
					(Amargosa buckwheat)						
	G4T4	S2	=	(1/76)	Heloderma suspectum cinctum	xC2NL	N, C		YES		1996
					(banded Gila monster)						
	G2G3	S2S3	\	(3/16)	Phacelia parishii	xC2	N, C				1995
					(Parish phacelia)						
Site: <b>STEWART VALLEY (NYE CO)</b>	G3	S3	\	(2/130)	Arctomecon merriamii	xC2	N	S			1998
Ranks: B1 P2 M2 Code: S. USNVHP*18					(white bearpoppy)						
Owners known: bp possible:	G3T3?	S2S3		(1/37)	Astragalus mohavensis var. mohavensis						1998
Elev.: 2297-2700 ft. Max. distance: 5.6 mi.					(Mojave milkvetch)						
Co(s): Nye	G3	S2		(1/3)	Ephedra funerea						1998
					(Death Valley Mormon tea)						
	G2	S2		(12/47)	Eriogonum bifurcatum	xC2	N, C				1998
					(Pahrump Valley buckwheat)						
	G2?	S1		(1/4)	Eriogonum contiguum						1971
					(Amargosa buckwheat)						
	G2G3	S2S3	\	(1/16)	Phacelia parishii	xC2	N, C				1998
					(Parish phacelia)						
	G3	S1		(2/4)	Salvia funerea						1998
					(Death Valley sage)						



Site information	Grank	Srank	Trnd	Site/Total	Scientific and common names	Usfws	Blm	Usfs	State	Ndm	Year
<b>PINE NUT MOUNTAINS MACROSITE</b>											
Site: <b>CHURCHILL NARROWS</b> Ranks: B1 P1 M1 Code: S.USWR01*1118 Owners known: bp possible: Elev.: 4300-4600 ft. Max. distance: 3.6 mi. Co(s): Lyon	G1	S1		(12/12)	Eriogonum diatomaceum (Churchill Narrows buckwheat)		N		CE#	Y	2005
Site: COMO (PINE NUT MTNS) Ranks: B2 P1 M2 Code: S.USNVHP*338 Owners known: p possible: b Elev.: 5870-7000 ft. Max. distance: 3.8 mi. Co(s): Lyon	G4	S3B	\	(1/87)	Corynorhinus townsendii (Townsend's big-eared bat)		N, C	S, I, L			1970
	G20	S2	\	(1/26)	Polyctenium williamsiae (Williams combleaf)		S, C	I	CE		1999
Site: DOUBLE SPRING FLAT Ranks: B1 P1 M2 Code: S.USNVHP*305 Owners known: pb possible: nf Elev.: 5550-5950 ft. Max. distance: 5.9 mi. Co(s): Douglas	G2	S1	\	(1/8)	Ivesia webberi (Webber ivesia)	C	S, C	S, C	CE		1997
	G2G3	S2S3		(1/22)	Penstemon rubicundus (Wassuk beardtongue)					Y	1979
	G20	S2	\	(1/26)	Polyctenium williamsiae (Williams combleaf)		S, C	I	CE		1998
	G1G2	S1		(1/4)	Pyrgulopsis wongi (Wongs pyrg)	xC2	N	I			1992
Site: MINERAL VALLEY Ranks: B1 P1 M2 Code: S.USNVHP*137 Owners known: possible: bp Elev.: 6360-6360 ft. Max. distance: 0.0 mi. Co(s): Douglas	G3T1	S1	\	(1/13)	Speyeria nokomis carsonensis (Carson Valley silverspot)	xC2	N				1964
Site: PINE NUT CREEK Ranks: B1 P2 M2 Code: S.USNVHP*343 Owners known: b possible: p Elev.: 5320-5700 ft. Max. distance: 1.8 mi. Co(s): Douglas	G4T2	S2		(1/12)	Astragalus oophorus var. lavinii (Lavin eggvetch)	xC2	N	S, W			1982
	G3T1	S1	\	(1/13)	Speyeria nokomis carsonensis (Carson Valley silverspot)	xC2	N				1964
Site: SLATERS MINE Ranks: B1 P2 M2 Code: S.USNVHP*342 Owners known: bp possible: Elev.: 6990-8550 ft. Max. distance: 3.4 mi. Co(s): Douglas	G2	S2		(14/14)	Ivesia pietycharis (Pine Nut Mountains mousetails)	xC2	N			Y	1993

Site information	Grank	Srank	Trnd	Site/Total	Scientific and common names	Usfws	Blm	Usfs	State	Ndm	Year
Site: SUGAR LOAF (PINE NUT MTNS) Ranks: B1 P1 M2 Code: S. USNVHP*344 Owners known: p possible: b Elev.: 6880-7000 ft. Max. distance: .1 mi. Co(s): Douglas	G5T3?	S1		(1/8)	Euphrydryas editha monoensis (Mono checkerspot)	xC2	N				1966
	G3T1	S1	\	(1/13)	Speyeria nokomis carsonensis (Carson Valley silverspot)	xC2	N				1977

#### PLEASANT VALLEY MACROSITE

Site: <b>COYOTE SPRINGS</b> Ranks: B1 P1 M1 Code: S. USNVHP*568 Owners known: p possible: Elev.: 4720-4720 ft. Max. distance: 0.0 mi. Co(s): Pershing	G1	S1		(1/1)	Pyrgulopsis aurata (Pleasant Valley springsnail)					Y	2001
-------------------------------------------------------------------------------------------------------------------------------------------------------------------	----	----	--	-------	-----------------------------------------------------	--	--	--	--	---	------

#### RAILROAD VALLEY MACROSITE

Site: BLUE EAGLE Ranks: B1 P2 M1 Code: S. USNVHP*256 Owners known: bp possible: n Elev.: 4750-5300 ft. Max. distance: 4.2 mi. Co(s): Nye	G2	S1		(1/7)	Astragalus uncialis (Currant milkvetch)	xC2	N	S			1981
	G4T1Q	S1		(3/7)	Gila bicolor ssp. (unnamed) (Railroad Valley tui chub)	xC2	N		YES	Y	1981
	G4	S2S3		(2/37)	Opuntia pulchella (sand cholla)				CY		1987
	G5T2	S2		(1/10)	Polites sabuleti basinensis (pallid skipper)					Y	1983
	G2T2	S2		(1/6)	Sphaeralcea caespitosa var. williamsiae (Railroad Valley globemallow)		N	S		Y	1987
Site: CROWS NEST Ranks: B1 P2 M2 Code: S. USNVHP*421 Owners known: b possible: pn Elev.: 4860-4860 ft. Max. distance: 0.0 mi. Co(s): Nye	G2	S1		(1/7)	Astragalus uncialis (Currant milkvetch)	xC2	N	S			1980/ 1981
Site: CURRANT Ranks: B1 P2 M1 Code: S. USWR01*1104 Owners known: bfp possible: n Elev.: 4770-6040 ft. Max. distance: 16.6 mi. Co(s): Nye	G3	S3		(2/7)	Astragalus callithrix (Callaway milkvetch)						1981
	G5T2Q	S2		(1/9)	Astragalus calycosus var. monophyllidius (one-leaflet Torrey milkvetch)						1979
	G2	S1		(1/7)	Astragalus uncialis (Currant milkvetch)	xC2	N	S			1983
	G3G4T2?Q	S2?		(2/15)	Cymopterus ripleyi var. ripleyi (Ripley biscuitroot)					Y	1980
	G3G4	S3S4		(1/4)	Gilia heterostyla (Cochrane gilia)					Y	1981

Site information	Grank	Srank	Trnd	Site/Total	Scientific and common names	Usfws	Blm	Usfs	State	Ndm	Year
CURRANT (cont.)	G5T1	S1		(1/4)	Hesperia uncas fulvapalla (Railroad Valley skipper)	xC2	N			Y	1984
	G1G2Q	S1		(1/4)	Sclerocactus blainei (Blaine pincushion)	xC2	N		CY	P	1981
	G2T2	S2		(1/6)	Sphaeralcea caespitosa var. williamsiae (Railroad Valley globemallow)		N	S		Y	1979
Site: <b>DUCKWATER SPRINGS</b>	G2	S2		(3/12)	Crenichthys nevadae (Railroad Valley springfish)	LT	S	T	YES	Y	2003
Ranks: B1 P1 M1 Code: S. USWR01*595	G4T1	S1		(1/1)	Gila bicolor ssp. (unnamed)	xC2				Y	1934/ 1981
Owners known: ipb possible:					(Duckwater Creek tui chub)						
Elev.: 3380-5610 ft. Max. distance: 4.0 mi.	G5T1	S1		(1/4)	Hesperia uncas fulvapalla (Railroad Valley skipper)	xC2	N			Y	1984
Co(s): Nye	G5T2	S2		(1/10)	Polites sabuleti basinensis (pallid skipper)					Y	1983
	G1	S1		(2/2)	Pyrgulopsis aloba (Duckwater pyrg)		N			Y	1998
	G1	S1		(1/1)	Pyrgulopsis anatina (southern Duckwater pyrg)		N			Y	1994
	G1	S1		(2/2)	Pyrgulopsis papillata (Big Warm Spring pyrg)		N			Y	1998
	G1	S1		(2/2)	Pyrgulopsis villacampae (Duckwater warm springs pyrg)		N			Y	1998
Site: <b>LOCKES</b>	G2Q	S2		(1/29)	Asclepias eastwoodiana (Eastwood milkweed)	xC2	N	S		Y	1980
Ranks: B1 P1 M1 Code: S. USWR01*1287	G5T2Q	S2		(1/9)	Astragalus calycosus var. monophyllidius						1980
Owners known: bpn possible:					(one-leaflet Torrey milkvetch)						
Elev.: 4715-6070 ft. Max. distance: 17.2 mi.	G2	S1		(3/7)	Astragalus uncialis (Currant milkvetch)	xC2	N	S			1981
Co(s): Nye	G4T3	S1B	\	(1/26)	Charadrius alexandrinus nivosus (Western Snowy Plover)	LTNL	N		YES		2001
	G2	S2		(7/12)	Crenichthys nevadae (Railroad Valley springfish)	LT	S	T	YES	Y	2003
	G3G4T2?Q	S2?		(1/15)	Cymopterus ripleyi var. ripleyi (Ripley biscuitroot)					Y	1981
	G4T1Q	S1		(1/7)	Gila bicolor ssp. (unnamed) (Railroad Valley tui chub)	xC2	N		YES	Y	2005
	G5T1	S1		(2/4)	Hesperia uncas fulvapalla (Railroad Valley skipper)	xC2	N			Y	1990
	G5T3T4	S3		(2/31)	Machaeranthera grindeloides var. depressa (rayless tansy aster)						1979
	G5T2	S2		(1/10)	Polites sabuleti basinensis (pallid skipper)					Y	1984

Site information	Grank	Srank	Trnd	Site/Total	Scientific and common names	Usfws	Blm	Usfs	State	Ndm	Year
LOCKES (cont.)	G1	S1		(1/1)	Pyrgulopsis lockensis (Lockes springsnail)					Y	2000
	G1G20	S1		(1/4)	Sclerocactus blainei (Blaine pincushion)	xC2	N		CY	P	2001
	G2T2	S2		(4/6)	Sphaeralcea caespitosa var. williamsiae (Railroad Valley globemallow)		N	S		Y	1989
Site: RAILROAD VALLEY NORTH Ranks: B1 P2 M1 Code: S.USNVHP*163 Owners known: bp possible: Elev.: 5750-6120 ft. Max. distance: 10.4 mi. Co(s): White Pine, Nye	G2	S2		(1/6)	Astragalus eurylobus (Needle Mountains milkvetch)	xC2	N				1983
	G4T10	S1		(2/7)	Gila bicolor ssp. (unnamed) (Railroad Valley tui chub)	xC2	N		YES	Y	2003

#### RENO/PEAVINE MACROSITE

Site: <b>NEVADA CENTRAL MINE</b> Ranks: B1 P1 M1 Code: S.USNVHP*483 Owners known: fp possible: b Elev.: 5480-6330 ft. Max. distance: 1.7 mi. Co(s): Washoe	G2G3	S2S3	\ \	(12/130)	Eriogonum robustum (altered andesite buckwheat)		N			Y	1995
	G1G20	S1S2	\	(1/8)	Mimulus ovatus (Steamboat monkeyflower)					Y	1984
	G2G3	S2S3	\	(1/11)	Plagiobothrys glomeratus (altered andesite popcornflower)		N			Y	1999
Site: <b>PANTHER/SUN VALLEY</b> Ranks: B1 P1 M1 Code: S.USNVHP*485 Owners known: pbn possible: Elev.: 4780-5320 ft. Max. distance: 1.6 mi. Co(s): Washoe	G2G3	S2S3	\ \	(16/130)	Eriogonum robustum (altered andesite buckwheat)		N			Y	1997
	G2G3	S2S3	\	(2/11)	Plagiobothrys glomeratus (altered andesite popcornflower)		N			Y	1999
Site: <b>PEAVINE PEAK</b> Ranks: B1 P1 M2 Code: S.USNVHP*481 Owners known: pf possible: b Elev.: 5240-7800 ft. Max. distance: 6.0 mi. Co(s): Washoe	G5	S3S4	=	(1/2)	Charina bottae (rubber boa)						2003
	G4	S3B	\	(1/87)	Corynorhinus townsendii (Townsend's big-eared bat)		N, C	S, I, L			1966
	G5T1	S1		(1/1)	Euphilotes enoptes aridorum (Peavine blue)					P	1981
	G2T2	S1	\	(1/7)	Ivesia aperta var. aperta (Sierra Valley mouselails)	xC2	N, C	S, C			1998
	G2	S1	\	(4/8)	Ivesia webberi (Webber ivesia)	C	S, C	S, C	CE		1997
	G4?	S1		(2/5)	Trifolium lemmonii (Lemmon clover)						1976

Site information	Grank	Srank	Trnd	Site/Total	Scientific and common names	Usfws	Blm	Usfs	State	Ndm	Year
Site: <b>RALEIGH HEIGHTS</b> Ranks: B1 P1 M1 Code: S. USNVHP*482 Owners known: fp possible: b Elev.: 5060-5880 ft. Max. distance: 2.6 mi. Co(s): Washoe	G2G3	S2S3	\\	(16/130)	Eriogonum robustum (altered andesite buckwheat)		N			Y	1997
	G2	S1	\	(2/8)	Ivesia webberi (Webber ivesia)	C	S, C	S, C	CE		2000
	G4?	S1		(1/5)	Trifolium lemmonii (Lemmon clover)						1979
Site: <b>RENO METROPOLITAN</b> Ranks: B3 P1 M1 Code: S. USNVHP*484 Owners known: pnb possible: Elev.: 4380-4700 ft. Max. distance: 5.9 mi. Co(s): Washoe	G3	S2B		(1/2)	Agelaius tricolor (Tricolored Blackbird)	xC2	N, C		YES		1972
	G4	S3B	\	(1/87)	Corynorhinus townsendii (Townsend's big-eared bat)		N, C	S, I, L			1942
	G5T3T4	S2S3	=	(1/6)	Elgaria coerulea palmeri (Sierra alligator lizard)		N				1988
	G3G4T3T4	S3		(2/8)	Emys marmorata marmorata (northwestern pond turtle)	xC2		C			1941
	G4	S1S2		(3/18)	Euderma maculatum (spotted bat)	xC2	S	S	YES		1987
	G5T3?	S1		(1/8)	Euphydryas editha monoensis (Mono checkerspot)	xC2	N				1918
	G5	S3		(1/24)	Lasionycteris noctivagans (silver-haired bat)		N				2000
	G5	S4B	=	(1/23)	Tadarida brasiliensis (Brazilian free-tailed bat)		N				1997

#### RUBY VALLEY MACROSITE

Site: <b>PERSONS SPRING</b> Ranks: B1 P1 M1 Code: S. USNVHP*587 Owners known: pb possible: fln Elev.: 6102-6440 ft. Max. distance: 15.7 mi. Co(s): Elko	G4	S3	\\	(3/112)	Brachylagus idahoensis (pygmy rabbit)	xC2	N		YES		2001
	G5T3	S3	\=	(1/21)	Polites sabuleti nigrescens (dark sandhill skipper)					Y	1981
	G1	S1		(1/2)	Pyrgulopsis leporina (Elko springsnail)					Y	1998
	G3T2	S2		(2/8)	Speyeria nokomis apacheana (Apache silverspot butterfly)						1997
Site: <b>SULPHUR HOT SPRINGS</b> Ranks: B1 P2 M1 Code: S. USWR01*542 Owners known: p possible: Elev.: 6000-6050 ft. Max. distance: 2.3 mi. Co(s): Elko	G4	S3	\\	(1/112)	Brachylagus idahoensis (pygmy rabbit)	xC2	N		YES		2001
	G1	S1		(1/1)	Eriogonum argophyllum (Sulphur Springs buckwheat)	RA	S		CE	Y	1990

Site information	Grank	Srank	Trnd	Site/Total	Scientific and common names	Usfws	Blm	Usfs	State	Ndm	Year
<b>SANTA RENIA MOUNTAINS MACROSITE</b>											
Site: <b>WILLOW/HOT CREEKS</b>	G4	S3	\\	(1/112)	Brachylagus idahoensis (pygmy rabbit)	xC2	N		YES		1993
Ranks: B1 P1 M1 Code: S.USNVHP*467											
Owners known: pb possible:	G5	S3B		(1/75)	Myotis ciliolabrum (western small-footed myotis)	xC2	N, C				1995
Elev.: 5270-5600 ft. Max. distance: 5.1 mi.											
Co(s): Elko	G4T3	S3		(1/138)	Oncorhynchus clarkii henshawi (Lahontan cutthroat trout)	LT	S	T	YES		1990
	G1	S1		(2/2)	Pyrgulopsis vinyardi (Vinyards pyrg)		N			Y	2001
<b>SODA SPRING VALLEY MACROSITE</b>											
Site: <b>SODAVILLE</b>	G5T1	S1		(1/2)	Astragalus lentiginosus var. sesquimetrali (Sodaville milkvetch)	RA	S		CE		2002
Ranks: B1 P1 M1 Code: S.USWR01*477											
Owners known: p possible:	G2	S2		(1/12)	Crenichthys nevadae (Railroad Valley springfish)	LT	S	T	YES	Y	2002
Elev.: 4635-4705 ft. Max. distance: .3 mi.											
Co(s): Mineral											
<b>STEPTOE VALLEY MACROSITE</b>											
Site: <b>COMINS LAKE</b>	G4	S3	\\	(1/112)	Brachylagus idahoensis (pygmy rabbit)	xC2	N		YES		1993
Ranks: B2 P1 M1 Code: S.USNVHP*259											
Owners known: pb possible:	G5T2	S2	\=	(3/11)	Cercyonis pegala pluvialis (White River wood nymph)	xC2	N				1991
Elev.: 6370-6841 ft. Max. distance: 13.3 mi.											
Co(s): White Pine	G2G3	S2S3		(2/31)	Relictus solitarius (relict dace)	xC2	N		YES	Y	1972/ 1994
Site: <b>CURRIE</b>	G4	S3	\\	(1/112)	Brachylagus idahoensis (pygmy rabbit)	xC2	N		YES		2001
Ranks: B1 P1 M1 Code: S.USNVHP*563											
Owners known: pb possible: n	G5T3	S3	\=	(1/21)	Polites sabuleti nigrescens (dark sandhill skipper)					Y	1983
Elev.: 5870-6348 ft. Max. distance: 5.6 mi.											
Co(s): Elko	G1	S1		(1/3)	Pyrgulopsis serrata (northern Steptoe springsnail)					Y	1998
Site: <b>INDIAN RANCH</b>	G5	S3B	\=	(1/36)	Antrozous pallidus (pallid bat)		N, C	I			1992
Ranks: B1 P1 M1 Code: S.USWR01*215											
Owners known: bp possible:	G4	S3B	\	(1/87)	Corynorhinus townsendii (Townsend's big-eared bat)		N, C	S, I, L			1992
Elev.: 6000-8038 ft. Max. distance: 4.6 mi.											
Co(s): White Pine, Elko	G4	S1S2		(1/18)	Euderma maculatum (spotted bat)	xC2	S	S	YES		1982/ 1996
	G5	S3B		(1/75)	Myotis ciliolabrum (western small-footed myotis)	xC2	N, C				1992

Site information	Grank	Srank	Trnd	Site/Total	Scientific and common names	Usfws	Blm	Usfs	State	Ndm	Year
INDIAN RANCH (cont.)	G5	S1S2	=	(1/9)	Myotis lucifugus (little brown myotis)		N				1992
	G4T2	S1		(1/8)	Oncorhynchus clarkii utah (Bonneville cutthroat trout)	xC2	N	S	YES		1977
	G1	S1		(1/5)	Oreohelix nevadensis (Schell Creek mountainsnail)	xC2	N			Y	1988
	G1	S1		(1/3)	Pyrgulopsis serrata (northern Steptoe springsnail)					Y	1991
Site: MCGILL Ranks: B1 P2 M1 Code: S.USNVHP*162 Owners known: pb possible: Elev.: 6030-6220 ft. Max. distance: 6.7 mi. Co(s): White Pine	G5T2	S2	\=	(1/11)	Cercyonis pegala pluvialis (White River wood nymph)	xC2	N				1989
	G5T1	S1		(2/3)	Phyciodes pascoensis arenacolor (Steptoe Valley crescent spot)	xC2	N			Y	1993
	G5T3	S3	\=	(1/21)	Polites sabuleti nigrescens (dark sandhill skipper)					Y	1983
	G2G3	S2S3		(1/31)	Relictus solitarius (relict dace)	xC2	N		YES	Y	1994
Site: MONTE NEVA HOT SPRINGS Ranks: B1 P1 M1 Code: S.USWR01*1651 Owners known: pb possible: Elev.: 5938-6000 ft. Max. distance: 1.0 mi. Co(s): White Pine	G1Q	S1		(1/2)	Castilleja saluginosa (Monte Neva paintbrush)	XC1	S		CE	Y	2002
	G5T2	S2	\=	(1/11)	Cercyonis pegala pluvialis (White River wood nymph)	xC2	N				1993
	G5T1	S1		(1/3)	Phyciodes pascoensis arenacolor (Steptoe Valley crescent spot)	xC2	N			Y	1993
	G5T3	S3	\=	(1/21)	Polites sabuleti nigrescens (dark sandhill skipper)					Y	1983
	G2G3	S2S3		(1/31)	Relictus solitarius (relict dace)	xC2	N		YES	Y	1980/ 1991
Site: STEPTOE RANCH Ranks: B1 P1 M1 Code: S.USNVHP*258 Owners known: p possible: b Elev.: 6037-6140 ft. Max. distance: 2.9 mi. Co(s): White Pine	G1	S1		(4/4)	Eremopyrgus eganensis (Steptoe Hydrobe)					Y	1992
	G1	S1		(1/1)	Pyrgulopsis landyei (Landyes pyrg)		N			Y	1995
	G1	S1		(1/1)	Pyrgulopsis neritella (neritiform Steptoe Ranch springsnail)					Y	1995
	G1	S1		(2/2)	Pyrgulopsis orbiculata (sub-globose Steptoe Ranch pyrg)		N			Y	1998
	G1	S1		(1/1)	Pyrgulopsis planulata (flat-topped Steptoe springsnail)					Y	1995
	G1	S1		(2/2)	Pyrgulopsis sulcata (southern Steptoe pyrg)		N			Y	1998
	G2G3	S2S3		(2/31)	Relictus solitarius (relict dace)	xC2	N		YES	Y	1994



Site information	Grank	Srank	Trnd	Site/Total	Scientific and common names	Usfws	Blm	Usfs	State	Ndm	Year
Site: <b>TWIN SPRINGS</b>	G1	S1		(1/3)	Pyrgulopsis serrata					Y	1998
Ranks: B1 P1 M1 Code: S. USWR01*1381					(northern Steptoe springsnail)						
Owners known: p possible:	G2G3	S2S3		(1/31)	Relictus solitarius	xC2	N		YES	Y	1994
Elev.: 6200-6200 ft. Max. distance: 0.0 mi.					(relict dace)						
Co(s): Elko											

#### STILLWATER RANGE MACROSITE

Site: <b>SAND MOUNTAIN</b>	G1	S1		(1/2)	Aegialia hardyi	xC2	N			Y	1994
Ranks: B1 P1 M1 Code: S. USWR01*1344					(Hardy's aegialian scarab)						
Owners known: b possible: pd	G4T3	S1B	\	(1/26)	Charadrius alexandrinus nivosus	LTNL	N		YES		1980
Elev.: 3895-4650 ft. Max. distance: 7.3 mi.					(Western Snowy Plover)						
Co(s): Churchill	G1?	S1		(1/2)	Coenonycha pygmaea					Y	1983
					(Sand Mountain pygmy scarab)						
	G3G4T1	S1		(2/2)	Euphilotes pallenscens arenamontana	xC2	N			Y	2000
					(Sand Mountain blue)						
	G2G30	S2		(4/21)	Helianthus deserticola						2000
					(dune sunflower)						
	G2?	S2?		(1/4)	Myrmecocystus arenarius					Y	1979
					(dune honey ant)						
	G2G3	S2S3		(2/69)	Oryctes nevadensis	xC2	N				1942
					(oryctes)						
	G1	S1		(1/2)	Serica psammobunus	xC2	N			Y	1980
					(Sand Mountain serican scarab)						

#### THOUSAND SPRINGS VALLEY/CREEK MACROSITE

Site: THOUSAND SPRINGS VALLEY	G3	S1	\=	(1/5)	Anodonta californiensis	xC2	N	C			1989
Ranks: B2 P1 M1 Code: S. USWR01*71					(California floater)						
Owners known: p possible:	G5T3	S3	\=	(3/21)	Polites sabuleti nigrescens					Y	1984
Elev.: 5480-6040 ft. Max. distance: 11.6 mi.					(dark sandhill skipper)						
Co(s): Elko											
Site: <b>TWENTYONE MILE RANCH</b>	G5	S1		(1/1)	Cottus confusus						1964
Ranks: B1 P1 M1 Code: S. USNVHP*597					(Shorthead Sculpin)						
Owners known: p possible: b	G1	S1		(1/1)	Pyrgulopsis millenaria					Y	1992
Elev.: 5160-5210 ft. Max. distance: 4.8 mi.					(Twentyone Mile springsnail)						
Co(s): Elko											

Site information	Grank	Srank	Trnd	Site/Total	Scientific and common names	Usfws	Blm	Usfs	State	Ndm	Year
<b>VIRGIN VALLEY MACROSITE</b>											
Site: MESQUITE UPLANDS	G5T2T3	S1S2		(1/3)	Astragalus lentiginosus var. stramineus (straw milkvetch)						1995
Ranks: B2 P1 M1 Code: S.USWR01*1164											
Owners known: b possible: pn	G4T4	S2	=	(3/76)	Heloderma suspectum cinctum (banded Gila monster)	xC2NL	N, C		YES		1994
Elev.: 1607-1952 ft. Max. distance: 4.1 mi.											
Co(s): Clark, Lincoln	G3G4	S1		(1/6)	Idionycteris phyllotis (Allen's big-eared bat)	xC2	N				1975
	G3	S3		(2/14)	Pediomelum castoreum (Beaver Dam breadroot)	xC2					1991
Site: RIVERSIDE	G4?T2T3	S2S3		(1/45)	Astragalus geyeri var. triquetrus (threecorner milkvetch)	xC2	S		CE		1979
Ranks: B1 P2 M1 Code: S.USWR01*918											
Owners known: pb possible: n	G3	S3	\	(1/24)	Astragalus nyensis (Nye milkvetch)						1979
Elev.: 1400-1750 ft. Max. distance: 1.9 mi.											
Co(s): Clark	G2	S2		(6/37)	Eriogonum viscidulum (sticky buckwheat)	xC2	S		CE		1995
Site: TOQUOP WASH	G4?T2T3	S2S3		(3/45)	Astragalus geyeri var. triquetrus (threecorner milkvetch)	xC2	S		CE		1995
Ranks: B1 P1 M1 Code: S.USWR01*1142											
Owners known: b possible:	G5T2T3	S1S2		(1/3)	Astragalus lentiginosus var. stramineus (straw milkvetch)						1995
Elev.: 1540-1936 ft. Max. distance: 3.9 mi.											
Co(s): Clark	G3	S3	\	(1/24)	Astragalus nyensis (Nye milkvetch)						1979
	G2	S2		(3/37)	Eriogonum viscidulum (sticky buckwheat)	xC2	S		CE		1995
	G4T4	S2	=	(1/76)	Heloderma suspectum cinctum (banded Gila monster)	xC2NL	N, C		YES		1993
	G3	S3		(1/14)	Pediomelum castoreum (Beaver Dam breadroot)	xC2					1991
Site: VIRGIN RIVER COORIDOR	G3G4	S1		(1/1)	Catostomus latipinnis (flannelmouth sucker)	xC2	N				2000
Ranks: B1 P1 M1 Code: S.USNVHP*443											
Owners known: np possible: bk	G5T3	S1B		(3/23)	Coccyzus americanus occidentalis (Western Yellow-billed Cuckoo)	C	S	I	YES		2000
Elev.: 1220-1575 ft. Max. distance: 17.1 mi.											
Co(s): Clark	G5T1T2	S1B		(2/17)	Empidonax traillii extimus (Southwestern Willow Flycatcher)	LE	S	E	YES		2004
	G1	S1		(1/1)	Gila semi nuda (Virgin River chub)	LE	S		YES		2004
	G1T1	S1		(2/4)	Lepidomeda molliispinis molliispinis (Virgin River spinedace)		N		YES		1999
	G1	S1		(1/2)	Plagiopterus argentissimus (woundfin)	LEXN	S		YES		2002
	G5T?	S1		(3/7)	Rallus longirostris yumanensis (Yuma Clapper Rail)	LE			YES		2003

Site information	Grank	Srank	Trnd	Site/Total	Scientific and common names	Usfws	Blm	Usfs	State	Ndm	Year
Site: VIRGIN RIVER UPLANDS Ranks: B1 P2 M1 Code: S. USWR01*162 Owners known: bpnkr possible: Elev.: 1100-2182 ft. Max. distance: 10.8 mi. Co(s): Clark	G4?T2T3	S2S3		(5/45)	Astragalus geyeri var. triquetrus (threecorner milkvetch)	xC2	S		CE		1995
	G3	S3	\	(2/24)	Astragalus nyensis (Nye milkvetch)						1979
	G2	S1		(1/6)	Cirsium virginense (Virgin River thistle)	xC2					1994
	G2	S2		(9/37)	Eriogonum viscidulum (sticky buckwheat)	xC2	S		CE		1998
	G2G3Q	S2		(1/21)	Helianthus deserticola (dune sunflower)						1982
	G4T4	S2	=	(1/76)	Heloderma suspectum cinctum (banded Gila monster)	xC2NL	N, C		YES		1939
	G3	S3		(1/14)	Pediomelum castoreum (Beaver Dam breadroot)	xC2					1991
	G5	S4B	=	(1/23)	Tadarida brasiliensis (Brazilian free-tailed bat)		N				1964

#### WHITE RIVER VALLEY MACROSITE

Site: <b>CAMP SPRING</b> Ranks: B1 P1 M1 Code: S. USNVHP*249 Owners known: p possible: Elev.: 5180-5180 ft. Max. distance: 0.0 mi. Co(s): Nye	G1	S1		(1/6)	Pyrgulopsis sathos (White River Valley springsnail)					Y	1998
	G5T2T3Q	S2S3		(1/19)	Rhinichthys osculus ssp. (unnamed) (White River speckled dace)	xC2	N			Y	1991
Site: <b>EMIGRANT SPRINGS</b> Ranks: B1 P1 M1 Code: S. USNVHP*552 Owners known: p possible: Elev.: 5460-5480 ft. Max. distance: .6 mi. Co(s): Nye	G1	S1		(2/2)	Pyrgulopsis gracilis (Emigrant springsnail)					Y	1998
	G1	S1		(2/7)	Pyrgulopsis marci da (Hardy springsnail)					Y	1998
	G5T2T3Q	S2S3		(1/19)	Rhinichthys osculus ssp. (unnamed) (White River speckled dace)	xC2	N			Y	1991
Site: <b>HARDY SPRINGS</b> Ranks: B2 P1 M1 Code: S. USNVHP*248 Owners known: p possible: Elev.: 5300-5380 ft. Max. distance: .5 mi. Co(s): Nye	G1	S1		(1/7)	Pyrgulopsis marci da (Hardy springsnail)					Y	1973
	G5T2T3Q	S2S3		(1/19)	Rhinichthys osculus ssp. (unnamed) (White River speckled dace)	xC2	N			Y	1991

Site information	Grank	Srank	Trnd	Site/Total	Scientific and common names	Usfws	Blm	Usfs	State	Ndm	Year
Site: <b>LUND</b> Ranks: B1 P1 M1 Code: S. USWR01*1323 Owners known: p possible: Elev.: 5598-5600 ft. Max. distance: 0.0 mi. Co(s): White Pine	G3G4T1T2Q	S1S2	\	(1/5)	Catostomus clarkii intermedius (White River desert sucker)	xC2	N		YES	Y	1991
	G1	S1		(1/6)	Pyrgulopsis sathos (White River Valley springsnail)					Y	1998
	G5T2T3Q	S2S3		(1/19)	Rhinichthys osculus ssp. (unnamed) (White River speckled dace)	xC2	N			Y	1991
Site: <b>LUND SOUTHWEST</b> Ranks: B1 P2 M2 Code: S. USNVHP*254 Owners known: bp possible: Elev.: 5395-5420 ft. Max. distance: 1.2 mi. Co(s): White Pine	G3	S3		(1/40)	Cryptantha welshii (White River catseye)	xC2	N			Y	1994
	G1	S1		(2/10)	Frasera gypsicola (Sunnyside green gentian)	xC2	S		CE		2000
Site: <b>MOON RIVER SPRING</b> Ranks: B1 P1 M1 Code: S. USWR01*852 Owners known: p possible: Elev.: 5188-5188 ft. Max. distance: 0.0 mi. Co(s): Nye	G2T1	S1		(1/3)	Crenichthys baileyi thermophilus (Moorman White River springfish)	xC2	N		YES	Y	2004
	G1	S1		(1/6)	Pyrgulopsis merriami (Pahrnagat pebblesnail)	xC2				Y	1992
Site: <b>MOORMAN SPRING</b> Ranks: B1 P1 M1 Code: S. USNVHP*253 Owners known: pb possible: Elev.: 5265-5305 ft. Max. distance: 3.7 mi. Co(s): Nye	G2T1	S1		(1/3)	Crenichthys baileyi thermophilus (Moorman White River springfish)	xC2	N		YES	Y	2004
	G3	S3		(2/40)	Cryptantha welshii (White River catseye)	xC2	N			Y	1994
	G1	S1		(1/6)	Pyrgulopsis merriami (Pahrnagat pebblesnail)	xC2				Y	2000
	G2	S2	\	(1/11)	Tryonia clathrata (grated tryonia)	xC2	N			Y	1992
Site: <b>MOORMAN SPRING SE</b> Ranks: B1 P2 M2 Code: S. USNVHP*250 Owners known: bnp possible: Elev.: 5190-5470 ft. Max. distance: 11.2 mi. Co(s): Nye	G3	S3		(8/40)	Cryptantha welshii (White River catseye)	xC2	N			Y	1994
	G2	S2		(1/8)	Eriogonum darrovii (Darrow buckwheat)						1980
	G1	S1		(2/10)	Frasera gypsicola (Sunnyside green gentian)	xC2	S		CE		1999
Site: <b>PRESTON</b> Ranks: B1 P1 M1 Code: S. USWR01*1066 Owners known: pbn possible: Elev.: 5600-6320 ft. Max. distance: 8.1 mi. Co(s): White Pine	G4	S3	\	(1/112)	Brachylagus idahoensis (pygmy rabbit)	xC2	N		YES		2001
	G3G4T1T2Q	S1S2	\	(1/5)	Catostomus clarkii intermedius (White River desert sucker)	xC2	N		YES	Y	2004
	G2T1	S1		(4/4)	Crenichthys baileyi albivallis (Preston White River springfish)	xC2	N		YES	Y	2003
	G3	S3		(2/40)	Cryptantha welshii (White River catseye)	xC2	N			Y	1994

Site information	Grank	Srank	Trnd	Site/Total	Scientific and common names	Usfws	Blm	Usfs	State	Ndm	Year
PRESTON (cont.)	G1	S1	=+	(1/2)	Lepidomeda albigallia (White River spinedace)	LE	S		YES	Y	2004
	G1	S1		(2/6)	Pyrgulopsis sathos (White River Valley springsnail)					Y	1998
	G5T2T3Q	S2S3		(4/19)	Rhinichthys osculus ssp. (unnamed) (White River speckled dace)	xC2	N			Y	2004
Site: <b>RUPPES PLACE/BOGHOLE</b>	G5T2	S2	\=	(3/11)	Cercyonis pegala pluvialis (White River wood nymph)	xC2	N				1993
Ranks: B1 P1 M1 Code: S. USNVHP*251	G1	S1		(1/10)	Frasera gypsicola (Sunnyside green gentian)	xC2	S		CE		1994
Owners known: pb possible:	G5T1	S1		(1/1)	Hesperia uncas grandiosa (White River Valley skipper)		N			Y	1989
Elev.: 5350-5630 ft. Max. distance: 5.7 mi.	G1	S1		(1/7)	Pyrgulopsis marci da (Hardy springsnail)					Y	1998
Co(s): White Pine, Nye	G5T2T3Q	S2S3		(1/19)	Rhinichthys osculus ssp. (unnamed) (White River speckled dace)	xC2	N			Y	1991
Site: <b>SUNNYSIDE/KIRCH WMA</b>	G2Q	S2		(1/29)	Asclepias eastwoodiana (Eastwood milkweed)	xC2	N	S		Y	1979
Ranks: B1 P1 M1 Code: S. USWR01*1530	G3G4T1T2Q	S1S2	\	(1/5)	Catostomus clarkii intermedius (White River desert sucker)	xC2	N		YES	Y	2004
Owners known: nbp possible:	G4T3	S1B	\	(2/26)	Charadrius alexandrinus nivosus (Western Snowy Plover)	LTNL	N		YES		1993
Elev.: 5150-5320 ft. Max. distance: 11.6 mi.	G1	S1		(1/1)	Cottus sp. (unnamed) (White River sculpin)					Y	1991
Co(s): Nye	G2T1	S1		(1/3)	Crenichthys baileyi thermophilus (Moorman White River springfish)	xC2	N		YES	Y	2004
	G3	S3		(14/40)	Cryptantha welshii (White River catseye)	xC2	N			Y	1994
	G2	S2		(1/8)	Eriogonum darrovii (Darrow buckwheat)						1979
	G1	S1		(5/10)	Frasera gypsicola (Sunnyside green gentian)	xC2	S		CE		1999
	G5T2T3	S2N		(2/4)	Ixobrychus exilis hesperis (Western Least Bittern)	xC2	N		YES		1983
	G1	S1	=+	(1/2)	Lepidomeda albigallia (White River spinedace)	LE	S		YES	Y	2004
	G1G2	S1S2		(6/7)	Mentzelia tiehmi (Tiehm blazingstar)		N			Y	2001
	G2G3	S2S3	\	(1/16)	Phacelia parishii (Parish phacelia)	xC2	N, C				1995
	G5T3	S3	\=	(1/21)	Polites sabuleti nigrescens (dark sandhill skipper)					Y	1984

Site information	Grank	Srank	Trnd	Site/Total	Scientific and common names	Usfws	Blm	Usfs	State	Ndm	Year
SUNNYSIDE/KIRCH WMA (cont.)	G1	S1		(2/3)	Pyrgulopsis breviloba (Flag springsnail)					Y	1998
	G1	S1		(1/1)	Pyrgulopsis lata (Butterfield springsnail)					Y	1992
	G1	S1		(1/7)	Pyrgulopsis marci da (Hardy springsnail)					Y	1998
	G1	S1		(1/6)	Pyrgulopsis merriami (Pahranagat pebblesnail)	xC2				Y	1992
	G1	S1		(2/6)	Pyrgulopsis sathos (White River Valley springsnail)					Y	1998
	G5T2T3Q	S2S3		(4/19)	Rhinichthys osculus ssp. (unnamed) (White River speckled dace)	xC2	N			Y	2004
	G4T3	S3		(1/39)	Townsendia jonesii var. tumulosa (Charleston grounddaisy)	xC2	N	S		Y	1985
	G2	S2	\	(1/11)	Tryonia clathrata (grated tryonia)	xC2	N			Y	1992
Site: <b>THE COVE</b> Ranks: B1 P1 M1 Code: S.USNVHP*252 Owners known: pb possible: Elev.: 5940-6200 ft. Max. distance: 3.3 mi. Co(s): White Pine	G3T3	S2?		(1/3)	Astragalus jejunus var. jejunus (starveling milkvetch)						2000
	G3G4T1T2Q	S1S2	\	(2/5)	Catostomus clarkii intermedius (White River desert sucker)	xC2	N		YES	Y	1991
	G5T2T3Q	S2S3		(5/19)	Rhinichthys osculus ssp. (unnamed) (White River speckled dace)	xC2	N			Y	1991

#### WHITE ROCK/WILSON CREEK RANGE MACROSITE

Site: <b>BIG JACK RANCH</b> Ranks: B1 P1 M1 Code: S.USNVHP*549 Owners known: p possible: Elev.: 7000-7000 ft. Max. distance: 0.0 mi. Co(s): Lincoln	G1	S1		(1/1)	Pyrgulopsis montana (Camp Valley springsnail)					Y	1992
Site: BURNT CANYON CREEK Ranks: B1 P2 M2 Code: S.USNVHP*626 Owners known: b possible: Elev.: 6700-6700 ft. Max. distance: 0.0 mi. Co(s): Lincoln	G1Q	S1		(1/2)	Eriogonum phoeniceum (scarlet buckwheat)		N				1987

#### WINDERMERE HILLS MACROSITE

Site: <b>PRATHER SPRINGS</b> Ranks: B1 P1 M1 Code: S.USNVHP*595 Owners known: p possible: Elev.: 5920-5920 ft. Max. distance: 0.0 mi. Co(s): Elko	G1	S1		(1/1)	Pyrgulopsis hovinghi (upper Thousand Spring springsnail)					Y	1990
---------------------------------------------------------------------------------------------------------------------------------------------------------------	----	----	--	-------	-------------------------------------------------------------	--	--	--	--	---	------

## ACKNOWLEDGMENTS

Staff biologists of NNHP conduct their own field work, but could not stay current statewide without also reviewing the studies of biologists, those here today and preceding us, who share their data and expertise on Nevada biodiversity and habitat conditions. Statewide occurrence records of vulnerable species, population status and trends, stressors to habitats, and other related data have been assimilated and reviewed in workshops and in numerous exchanges that generated the assessments presented here. We greatly appreciate the knowledgeable contributions made through the Nevada Rare Plant Workshops, the mammal and herp workshops, and other avenues. We appreciate deeply and value greatly the dedication and generosity of all participants.

Throughout the process of developing the Scorecard, new data and evaluations of populations in neighboring states can impact the ranks of our Nevada species. Nomenclatural changes are frequent throughout the botanical and zoological world. The central NatureServe office furnishes global and national updates – consistency in a system fraught with change. We thank the members of the NatureServe network; they offer quality control and editing that is invaluable.

Susan Abele and Janet Bair of The Nature Conservancy reviewed the entire draft inventory and made valuable contributions. Brian Hobbs and Jon Sjoberg of the Nevada Department of Wildlife (NDOW) assessed the bulk of our data on aquatic species and provided recommendations based on their extensive field surveys. Erica Fleishman of Stanford University reviewed butterfly rankings and habitat evaluations, updating the arduous reviews from George Austin, Nevada State Museum. Don Sada, Desert Research Institute, shared his extensive records and knowledge of springsnail diversity and habitats.

At our final workshop, Pete Bradley, David Catalano, Jenni Jeffers, Anita Shaul, Cris Tomlinson, (NDOW); Margie Klein, Nevada Division of Forestry; Joanne Baggs and Portia Jelinek, U.S. Forest Service; Steve Caicco and Kevin Kritz, U.S. Fish & Wildlife Service; and, Dean Tonenna, Bureau of Land Management, contributed their expertise to bring us to the point of presenting *Scorecard 2006: Highest Priority Conservation Sites of Nevada*.

Thanks to those who allowed us to use their photographs. Acknowledgement accompanies each photo.

Finally, we gratefully acknowledge the financial support received from the State of Nevada, the Department of Conservation and Natural Resources and Department of Transportation; the Bureau of Land Management, the U.S. Forest Service, and the U.S. Fish and Wildlife Service through the Nevada Biodiversity Initiative.



## APPENDIX 1

## Changes in the Highest Priority Conservation Site List

### Scorecard 2000 – Scorecard 2006

Scorecard Sites ( 2006 SITES )	Macrosite Name	1998*	2000	2006	Explanation of Changes from 2000 to 2006 Scorecard Site List
<i>APEX</i>	Las Vegas	Y	Y	Y	
<i>ASH MEADOWS</i>	Amargosa Desert	--	--	Y	Species/habitat less secure; P and M ranks = 1
<i>ASH SPRINGS/PAHRANAGAT RIVER</i>	Pahranagat Valley	Y	Y	Y	
Bald Mountain	Pine Grove/Sweetwater	Y	--	--	
Beatty	Beatty Macrosite	Y	--	--	
<i>BIG JACK RANCH</i>	White Rock/Wilson Creek Range	--	Y	Y	
<i>BIG SPRINGS</i>	Hamlin Valley	--	Y	Y	
<i>BIG/LAVA DUNE</i>	Amargosa Desert	Y	Y	Y	
<i>BLACK CANYON SPRINGS</i>	Lake Mead	--	Y	Y/NC	Former site name Hoover Dam; Black Canyon Springs site partitioned from former Hoover Dam site (see Hoover Dam Refugia)
Blue Link Spring	Pilot Mountains	--	Y	--	Springs remote, potential threat increase; P rank = 2; macrosite removed
<i>BLUE POINT, RODGERS, AND SURROUNDING SPRINGS</i>	Lake Mead	--	Y	Y/NC	Former site name Blue Point Springs
<i>BRADISH SPRING/WILLOMONTE RANCH</i>	Clover Valley	Y	Y	Y/NC	Former site named Bradish Spring. Wright Ranch site renamed Willomonte; combined with Bradish Spring to form single site.
Bullfrog Hills	Beatty	Y	--	--	
<i>CAIN SPRING</i>	Augusta Mountains	--	--	Y	Species less secure; P and M ranks = 1
<i>CAMP SPRING</i>	White River Valley	--	Y	Y	
<i>CARICO LAKE SPRINGS</i>	Carico Lake Valley	--	Y	Y	
Carson City Wetlands	Carson River Basin	Y	--	--	
<i>CHARNOCK RANCH</i>	Big Smoky Valley North	--	Y	Y	
<i>CHURCHILL NARROWS</i>	Pine Nut Mountains	Y	Y	Y	
Circle Ranch	Newark Valley	Y	--	--	

## Changes in the Highest Priority Conservation Site List

### Scorecard 2000 – Scorecard 2006

Scorecard Sites ( 2006 SITES )	Macrosite Name	1998*	2000	2006	Explanation of Changes from 2000 to 2006 Scorecard Site List
Cold Springs	Gabbs Valley	Y	Y	--	Springs remote, potential threat increase; P rank = 2; macrosite removed
<b>CONDOR CANYON</b>	Meadow Valley Wash	C	--	Y	Species less secure; P and M ranks = 1
<b>COOKS CREEK</b>	Carico Lake Valley	--	Y	Y	
<b>CORN CREEK SPRINGS</b>	Las Vegas	--	Y	Y	
<b>COYOTE SPRINGS</b>	Pleasant Valley	--	Y	Y	
Crescent Dunes	Big Smoky Valley South	Y	--	--	
<b>CRITTENDEN SPRINGS</b>	Delano Mountains	--	Y	Y	
<b>CRYSTAL SPRINGS (LINCOLN CO.)</b>	Pahranagat Valley	Y	Y	Y	
<b>CURRIE</b>	Steptoe Valley	--	Y	Y	
Dalzell Canyon	Pine Grove/Sweetwater	Y	--	--	
<b>DARROUGHS SPRING</b>	Big Smoky Valley North	--	Y	Y	
Dolly Varden Spring	Antelope Valley	--	Y	--	Springs remote, potential threat increase; P rank = 2; macrosite removed
<b>DUCKWATER SPRINGS</b>	Railroad Valley	Y	Y	Y/NC	Former name Duckwater Indian Reservation
<b>EAGLE FLAT</b>	Knoll Mountain	--	Y	Y	
<b>EMIGRANT SPRINGS</b>	White River Valley	--	Y	Y	
<b>FISH CREEK SPRINGS</b>	Fish Creek Valley	Y	Y	Y	
Fish Lake	Fish Lake Valley	Y	--	--	
<b>FLY GEYSER</b>	Black Rock Desert	--	--	Y	New site recommended per peer review; Fly Geyser site combined with Soldier Meadows companion site to form Black Rock Desert Macrosite
<b>GALENA CREEK COUNTY PARK</b>	Carson Front	Y	Y	Y	
Geiger Grade	Virginia Range	Y	--	--	
Geyser	Lake Valley	--	Y	-- /NC	Site name changed (see Lake Valley Springs)
Goicoechea Ranch	Newark Valley	Y	--	--	
<b>HIKO</b>	Pahranagat Valley	Y	Y	Y	
Hoover Dam Refugia	Lake Mead	--	Y	C/R	Former site name Hoover Dam; partitioned into Black Canyon Springs site and Hoover Dam Refugia (now ranked as companion site)

## Changes in the Highest Priority Conservation Site List

### Scorecard 2000 – Scorecard 2006

Scorecard Sites ( 2006 SITES )	Macrosite Name	1998*	2000	2006	Explanation of Changes from 2000 to 2006 Scorecard Site List
<b>HOT CREEK</b>	Hot Creek Valley/Palisade	Y	Y	Y/NC	Former site name Twin Springs Ranch
<b>HOT SPRING HILL</b>	Kobeh Valley	Y	Y	Y	
<b>INDIAN RANCH</b>	Steptoe Valley	--	Y	Y	
<b>LAKE TAHOE (AQUATICS)</b>	Lake Tahoe Basin	Y	Y	Y	
Lake Tahoe (Beach)	Lake Tahoe Basin	Y	Y	C	Species more secure with completion/implementation of Rorippa subumbellata management plan; M rank = 2
<b>LAKE VALLEY SPRINGS</b>	Lake Valley	--	Y	Y/NC	Former site name Geyser
Las Vegas Metropolitan	Las Vegas	Y	Y	-- E/R	Examining recent species occurrence data, site parameters; some Las Vegas Metropolitan species occurrences grouped in North Las Vegas Site
<b>LOCKES</b>	Railroad Valley	C	Y	Y	
Logandale/Overton	Moapa	C	Y	--/R	Site realigned; species occurrences grouped in Muddy River Corridor and Uplands site
<b>LUND</b>	White River Valley	Y	Y	Y	
<b>MCNETT RANCH</b>	Fish Lake Valley	Y	Y/NC	Y	Fish Lake site name changed to McNett Ranch
Moapa	Moapa Valley	Y	Y	-- /NC	Site name changed to Muddy River Corridor and Uplands
<b>MOAPA NWR/WARM SPRINGS</b>	Moapa Valley	Y	Y	Y/NC	Former site name Moapa Valley Springs
Moapa Valley Springs	Moapa Valley	Y	Y	-- /NC	Site name changed (see Moapa NWR/Warm Springs)
<b>MONTE NEVA HOT SPRINGS</b>	Steptoe Valley	Y	Y	Y	
<b>MOON RIVER SPRING</b>	White River Valley	Y	Y	Y	
<b>MOORMAN SPRING</b>	White River Valley	Y	Y	Y	
<b>MUDDY RIVER CORRIDOR AND UPLANDS</b>	Moapa Valley	Y	Y	Y NC/R	Former site name Moapa; site includes species occurrences of former Logandale/Overton site
<b>NEVADA CENTRAL MINE</b>	Reno / Peavine	--	C	Y	
North Carson Range	Carson Front	Y	C/NC	C	Site name changed to Carson Range North
<b>NORTH LAS VEGAS</b>	Las Vegas	--	--	Y	New site recommended per peer review; site includes Las Vegas wash species occurrences and part of Las Vegas Metropolitan site occurrences
Oasis Valley	Beatty	Y	--	--	

## Changes in the Highest Priority Conservation Site List

### Scorecard 2000 – Scorecard 2006

Scorecard Sites ( 2006 SITES )	Macrosite Name	1998*	2000	2006	Explanation of Changes from 2000 to 2006 Scorecard Site List
<b>PAHRANAGAT NWR</b>	Pahranagat Valley	C	Y	Y	
<b>PAHRUMP</b>	Pahrump Valley	Y	Y	Y	
<b>PANTHER / SUN VALLEY</b>	Reno / Peavine	--	Y	Y	
<b>PERSONS SPRING</b>	Ruby Valley	--	Y	Y	
<b>PRATHER SPRINGS</b>	Windermere Hills	--	Y	Y	
<b>PRESTON</b>	White River Valley	Y	Y	Y	
<b>RABBIT CREEK</b>	Lamoille/Pleasant Valley	--	Y	Y	
<b>RALEIGH HEIGHTS</b>	Reno/Peavine	Y	Y	Y	
<b>RUPPES PLACE/BOGHOLE</b>	White River Valley	Y	Y	Y	
<b>SAND MOUNTAIN</b>	Stillwater Range	--	Y	Y/R	Former Sand Springs Range companion site merged with Sand Mountain site
<b>SODAVILLE</b>	Soda Spring Valley	Y	Y	Y	
Steamboat Springs	Steamboat Hills	Y	--	--	
<b>STEPTOE RANCH</b>	Steptoe Valley	--	Y	Y	
<b>SULLIVAN SPRING</b>	Antelope Valley	--	Y	Y	
Sulphur Hot Springs	Ruby Valley	Y	C	C	
<b>SUNNYSIDE/KIRCH WMA</b>	White River Valley	Y	Y	Y	
<b>THACKER PASS</b>	Montana Mtns/Double H Mtns	--	Y	Y	
<b>THE COVE</b>	White River Valley	Y	Y	Y	
<b>TOQUOP WASH</b>	Virgin Valley	--	C	Y	Species less secure – major energy/water projects; P and M ranks = 1
<b>TWENTYONE MILE RANCH</b>	Thousand Springs Valley/Creek	--	Y	Y	
<b>TWIN SPRINGS</b>	Steptoe Valley	--	Y	Y	
Twin Springs Ranch	Hot Creek Valley/Palisade	Y	Y	-- /NC	Site name changed (see Hot Creek site)
<b>VIRGIN RIVER CORRIDOR</b>	Virgin Valley	Y	Y	Y R/NC	Former site name Virgin River; species occurrences of former Bunkerville companion site grouped with Virgin River Corridor site
<b>WALL CANYON</b>	High Rock/Hays Canyon Range	--	--	Y	Species less secure – introduced fishes, habitat management challenges; P and M ranks = 1
<b>WARM CREEK RANCH</b>	Clover Valley	Y	Y	Y	

## Changes in the Highest Priority Conservation Site List

### Scorecard 2000 – Scorecard 2006

Scorecard Sites ( 2006 SITES )	Macrosite Name	1998*	2000	2006	Explanation of Changes from 2000 to 2006 Scorecard Site List
<b>WARM SPRINGS RANCH (ELKO CO.)</b>	Independence Valley	Y	Y	Y	
<b>WARM SPRINGS VALLEY (WASHOE CO.)</b>	Pah Rah Range	--	Y	Y	
Willow Creek Reservoir	Sheep Creek Range	--	Y	-- /NC	Site name changed; see Willow/Hot Creek site; Macrosite name changed to Santa Renia Mountains
<b>WILLOW/HOT CREEK</b>	Santa Renia Mountains	--	Y	Y	Former site name Willow Creek Reservoir; former Macrosite name Sheep Creek Range
Wright Ranch	Clover Valley	Y	Y	-- R/NC	Site realigned – combined with Bradish Spring; (see Bradish Spring/Willomonte Ranch site); Wright Ranch name changed to Willomonte
	Spring Mountains		--	E	Potential high priority site; examining recent species occurrence data and re-evaluating site parameters, delineation alternatives.
<p>* The first NNHP Scorecard was produced in 1998. However, the Scorecard Site status changes listed here only include sites identified in 2000 and 2006 Scorecards. The “1998” column indicates presence or absence of the 2000 or 2006 sites on the 1998 Scorecard.</p> <p>Code Explanations: Y=Scorecard site; NC=Name change; E=Evaluating data for future Scorecard delineation; R=Realignment of site area; C=Companion Site (B, P, or M rank &gt; 1)</p>					

### Ash Meadows Rare Riches



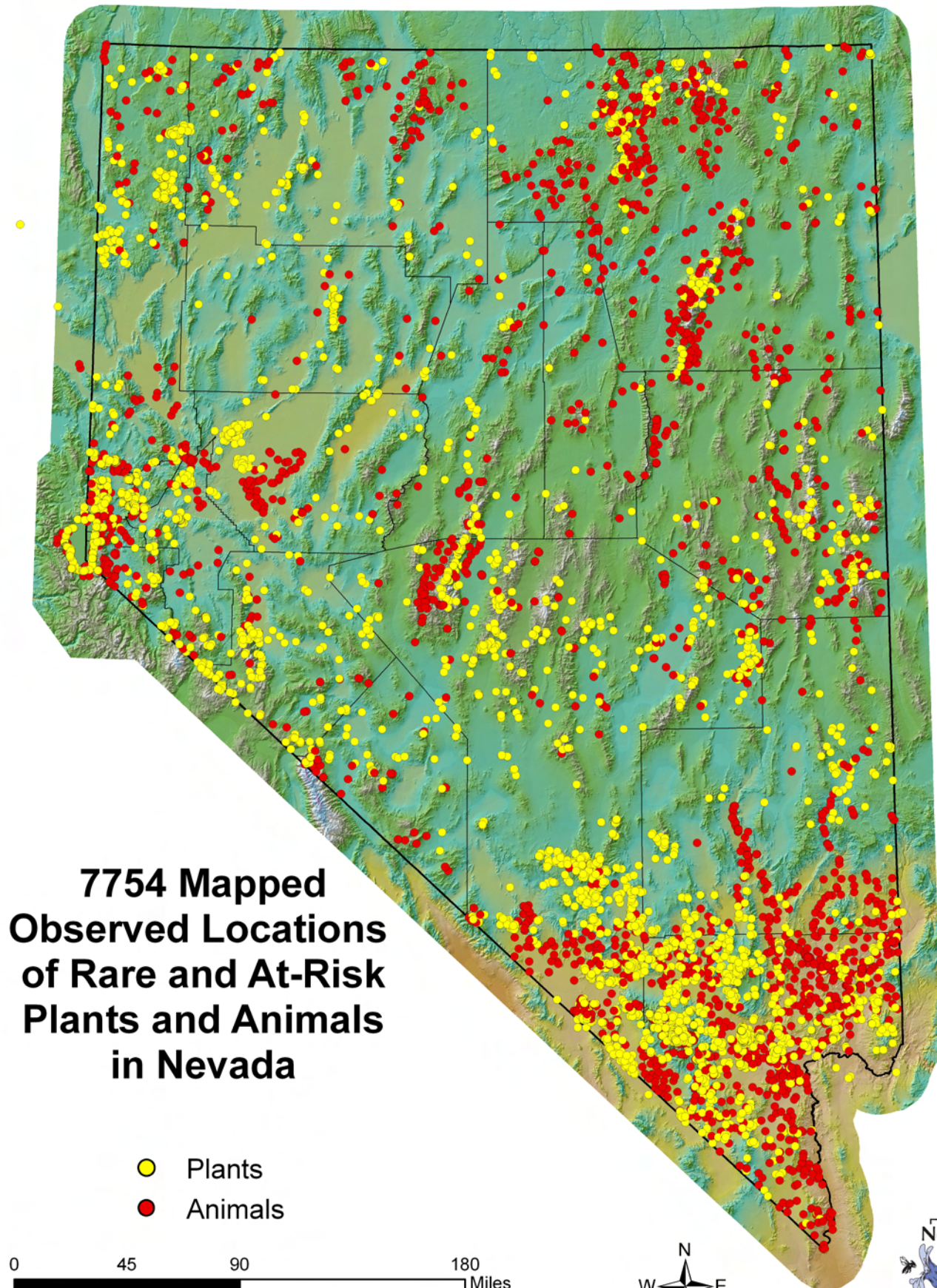
To Americans who know natural history, and their numbers are certain to grow with each passing generation, Nevada's Ash Meadows and Florida's Lake Wales scrubland are sacred landmarks, the equivalent of Independence Hall and Gettysburg of original America.

Edward O. Wilson  
Forward, Precious Heritage,  
The Status of Biodiversity  
in the United States  
The Nature Conservancy and  
Association for Biodiversity Information, 2000



*Centaurea namophilum* (spring loving centaury) and *Ivesia kingii* var. *eremica* (Ash Meadows ivesia) are two of the 39 taxa tracked by the NNHP within the Ash Meadows Scorecard site. Twenty-one are Nevada endemics, including plants, insects, fishes, mollusks, and a mammal. The isolation of this comparatively large natural springs complex in the warm Amargosa Desert enabled many distinctive aquatic and wetland species to evolve here. The Ash Meadows NWR is internationally renowned for biological rarity and richness. Residential development and groundwater withdrawals in past decades gravely altered some habitats. The Devil's Hole pupfish remains perilously close to extinction. A local endemic species, *Empetrichthys merriami* (Ash Meadows poolfish), was extinguished by the early 1950s due to habitat degradation and predation by exotic bullfrogs and crayfish. Groundwater levels and spring discharges are monitored by the FWS. Recent trend data indicates discharge rates are declining in some refuge springs connected to the regional carbonate aquifer. Another local endemic, *Microtus montanus nevadensis* (Ash Meadows montane vole) is possibly extinct. Ivesia photo by Gary A. Monroe and centaury photo by James L. Reveal, USDA-NRCS PLANTS database.





**7754 Mapped  
Observed Locations  
of Rare and At-Risk  
Plants and Animals  
in Nevada**

- Plants
- Animals

0 45 90 180 Miles

1:3,600,000



Map compiled by the Nevada Natural Heritage Program, December 2006

# NEVADA NATIVE SPECIES SITE SURVEY REPORT

rev. WXP-2005-09

**SEND TO: NEVADA NATURAL HERITAGE PROGRAM, 901 South Stewart Street, suite 5002, Carson City, NV 89701-5245**

**(775) 684-2900**

**PLEASE ENTER ALL INFORMATION AVAILABLE TO YOU. USE THE BACK FOR COMMENTS IF NECESSARY. PLEASE INCLUDE GPS DATA, AND/OR ATTACH PRECISE MAP.**

☐ **Data Sensitive?**

## OFFICE USE ONLY

Reference Code/ID: \_\_\_\_\_ Source ID: \_\_\_\_\_  
Element Code/ID: \_\_\_\_\_ EO ID or #: \_\_\_\_\_  
Copies Sent to: \_\_\_\_\_

Scientific name (no codes): \_\_\_\_\_  
Surveyor/Reporter (incl. e-mail if any): \_\_\_\_\_ Phone: (\_\_\_\_\_) \_\_\_\_\_

Address: \_\_\_\_\_

Date of Survey: \_\_\_\_\_ day \_\_\_\_\_ month \_\_\_\_\_ year County: \_\_\_\_\_ Collection # \_\_\_\_\_ Museum/Herb.: \_\_\_\_\_

<b>G P S</b> (if used)	DATUM (NAD27 preferred, or NAD83, WGS84, other):	Projection/units (UTM Zone-11/meters preferred, decimal-degrees, dms, or other; specify any non-standard parameters):
	Differential correction applied (yes/no/unknown)?:	Equipment used

**LOCATION DESCRIPTION (please include or attach GPS coordinates and/or a precise map, showing species boundaries/points and routes/areas searched):**

**Map and/or GPS data** estimated to depict true locations to within  $\pm$  \_\_\_\_\_ m/ft on the ground, and/or  $\pm$  \_\_\_\_\_ mm/in on paper map.

Map Name: \_\_\_\_\_ Field # \_\_\_\_\_ T \_\_\_\_\_ R \_\_\_\_\_ ¼ of \_\_\_\_\_ ¼ Sect. \_\_\_\_\_  
scale=1: \_\_\_\_\_ Elevation: \_\_\_\_\_ to \_\_\_\_\_  $\pm$  \_\_\_\_\_ m/ft T \_\_\_\_\_ R \_\_\_\_\_ ¼ of \_\_\_\_\_ ¼ Sect. \_\_\_\_\_

Observed Area or Length Occupied: \_\_\_\_\_ Land Manager: \_\_\_\_\_

Extent of occurrence completely surveyed (Yes/No/Unknown)?:	if No, about _____ % of potential habitat was surveyed at this occurrence.	The species occupied about:	% of area/length depicted by map or GPS data.
-------------------------------------------------------------	----------------------------------------------------------------------------	-----------------------------	-----------------------------------------------

Is this a new location record (Yes/No/Unknown)?: \_\_\_\_\_ a subsequent visit?: \_\_\_\_\_ Compared to last visit: \_\_\_ more \_\_\_ same \_\_\_ fewer

# of individuals / stems: \_\_\_\_\_ census methods (if zero, reason): \_\_\_\_\_

# of colonies / genets: \_\_\_\_\_ if different, explain: \_\_\_\_\_

Does this population occur naturally at this site (Yes/No/Partially/Unknown)?: \_\_\_\_\_ Is this population re-introduced (Yes/No/Partially/Unknown)?: \_\_\_\_\_

Phenologic Stages (plants): \_\_\_\_\_ % dormant \_\_\_\_\_ % vegetative \_\_\_\_\_ % budding \_\_\_\_\_ % flowering \_\_\_\_\_ % fruiting \_\_\_\_\_ % seeding

Age Structure (all): \_\_\_\_\_ % senescent \_\_\_\_\_ % adult/mature \_\_\_\_\_ % juvenile \_\_\_\_\_ % first-year \_\_\_\_\_ % newborn/seedling

Site Functions/Uses (animals): \_\_\_ breeding \_\_\_ foraging \_\_\_ wintering \_\_\_ roosting \_\_\_ denning \_\_\_ migrating \_\_\_\_\_ other

**INTERACTIONS (disease, predation, competition, parasitism, symbiosis, pollination, hybridization, dispersal, etc.):**

**HABITAT DESCRIPTION (dominant species, associates, other rare species, moisture, substrate/soils, aspect/slope, light, air/water temperature, time, weather, etc.):**

**CURRENT SITE USE / Visible Disturbances and Impacts / Possible Threats:**

Overall Occurrence Quality: \_\_\_\_\_ Excellent \_\_\_\_\_ Good \_\_\_\_\_ Fair \_\_\_\_\_ Poor (consider size, viability, condition, and landscape context)

**COMMENTS ON QUALITY:**

**SHOULD/COULD THIS SITE BE PROTECTED? How?:**

**OTHER COMMENTS:**

**IDENTIFICATION OF TAXON (Fill in all applicable blanks): ID is about \_\_\_\_\_ % certain.**

Keyed in reference: \_\_\_\_\_  
Compared w/photo/drawing in: \_\_\_\_\_  
Compared with specimen at: \_\_\_\_\_  
By another person (include below; name): \_\_\_\_\_  
By personal knowledge (yes/no): \_\_\_\_\_  
Other: \_\_\_\_\_

**PHOTOGRAPHS (check all applicable):**

Subject: \_\_\_\_\_ Type: \_\_\_\_\_  
\_\_\_\_\_ Diagnostic feature \_\_\_\_\_ Digital  
\_\_\_\_\_ Whole organism(s) \_\_\_\_\_ Slide  
\_\_\_\_\_ Habitat or site \_\_\_\_\_ Print  
Attached (Yes/No)? \_\_\_\_\_ Other  
May we obtain copies at our cost? \_\_\_\_\_

**OTHER KNOWLEDGEABLE PEOPLE (Name / Address / Phone / E-mail):**



# NEVADA NATURAL HERITAGE PROGRAM DATA REQUEST FORM

rev. WXP-2005-10

Use this form to query the Nevada Natural Heritage Program database for location information of at-risk species. Please fill out this form as completely and specifically as possible, attaching additional sheets as needed. For more information on available species and data fields, fees, limitations, and restrictions, please visit our web site <<http://heritage.nv.gov>> or contact us for printed information. We cannot guarantee our response time; normal time is about two weeks, and we will strive to (and usually can) meet more urgent deadlines.

Date signed: \_\_\_\_\_ Date needed: \_\_\_\_\_

Organization: \_\_\_\_\_

Mailing Address: \_\_\_\_\_

Phone: \_\_\_\_\_ FAX: \_\_\_\_\_ email: \_\_\_\_\_

Project or Site Name: \_\_\_\_\_

How will the information be used? \_\_\_\_\_

## KIND OF SEARCH

(see current fee schedule <<http://heritage.nv.gov/fees.htm>> for descriptions, costs, and examples)

\_\_\_\_\_ Standard (one-time), OR... Annual Subscription: \_\_\_\_\_ first year \_\_\_\_\_ continuation

## LIMIT SEARCH BY THE FOLLOWING CRITERIA

(check or complete all that apply to ensure you purchase only the records you want)

Location (please specify by township-range-section, map quadrangle, watershed, or other boundaries, and attach map(s) when possible; for GIS requests, submit polygon(s) of area(s) in UTM Zone-11 meter coordinates, NAD27 datum, as ArcView® shapefiles if possible):

Species: \_\_\_\_\_ all plants \_\_\_\_\_ all animals \_\_\_\_\_ all vertebrates \_\_\_\_\_ all invertebrates

other (specify groups/taxa): \_\_\_\_\_

Status: \_\_\_\_\_ all at-risk \_\_\_\_\_ all federal T/E/candidate \_\_\_\_\_ all state T/E \_\_\_\_\_ all watch-list

Additional Limiting Criteria (please specify; see data catalog <<http://heritage.nv.gov/dataflds.htm>> for searchable fields):

## FORMAT AND CONTENT OF SEARCH RESULTS

(see fee schedule <<http://heritage.nv.gov/fees.htm>> and data catalog <.../dataflds.htm> for format descriptions and available fields)

\_\_\_\_\_ Standard Summary Records (name, status, location, precision, date), specify: \_\_\_\_\_ printed \_\_\_\_\_ ASCII text file

\_\_\_\_\_ OR Complete or Customized (enter desired fields below) Records, specify: \_\_\_\_\_ printed \_\_\_\_\_ ASCII text file

\_\_\_\_\_ OR ArcView® GIS shapefiles (complete records only), specify:

projection (none=UTM Zone-11 meters): \_\_\_\_\_ datum (blank=NAD27): \_\_\_\_\_

Custom Fields (enter names or types of ALL data fields to include for custom records):

## HOW YOU WANT THE RESULTS SENT

Please Send: \_\_\_\_\_ search results immediately \_\_\_\_\_ cost estimate first \_\_\_\_\_ exact cost first

Send by any of the following checked methods: \_\_\_\_\_ U.S. Mail \_\_\_\_\_ FAX \_\_\_\_\_ email \_\_\_\_\_ FedEx

For FedEx, include PHYSICAL address above, and specify account to charge:

BY SIGNING BELOW, I acknowledge that I have read and agreed to abide by the Nevada Natural Heritage Program's (NNHP's) current fee schedule <<http://heritage.nv.gov/fees.htm>> and its data limitations and restrictions <.../limitats.htm> (contact us for printed copies). I also agree that (1) all data supplied, and the analytic tools and processes from which they are derived, are the privileged, confidential property of NNHP, and/or The Nature Conservancy, Inc., and/or those who supplied the data to NNHP, and will not be provided to any other party without our consent; (2) in any use of the data, NNHP will be cited as a source, along with the year and month it supplied the data; and (3) while NNHP strives for accuracy and completeness, the data it supplies depend on the observations and research of many individuals and organizations, new data are constantly received, and in no case will the data be represented as a complete survey of any species or area.

Signature

Name (please print)

Title

Please MAIL or FAX completed and signed form to: Nevada Natural Heritage Program, attn: Data Manager, 901 S Stewart St, suite 5002, Carson City NV 89701-5245. FAX (775) 684-2715, phone (775) 684-2905.



DEPARTMENT OF  
**CONSERVATION &  
NATURAL RESOURCES**

## **Nevada Natural Heritage Program**

901 South Stewart Street, Room 5002  
Carson City, NV 89701-5245

Voice: 775-684-2900

Fax: 775-684-2909

<http://heritage.nv.gov/index.htm>

2006